

THE BUTTERFLY TREE

**UK CHARITY & NON-GOVERNMENT ORGANISATION
HELPING RURAL COMMUNITIES IN ZAMBIA**



ANNUAL REPORT 2011-2012

UK Charity No 1118084

FROM THE CHAIR...

Once again I am delighted to say that we have had another incredible year. Our work has expanded into a third Chiefdom and more orphans are being assisted. Despite the current climate we have once again raised a quarter of a million pounds - a huge amount for a small charity, which is even more significant when you consider that virtually 100% of this goes directly into grassroots projects.

One of the highlights of the year was being selected, out of hundreds of charities working in Africa, as the charity having the best proven record of transparency. It was a privilege to be invited to Zurich to receive a cheque for US\$27,000 from ENRC Marketing. In January three new schools were opened, for some children this was their first experience to attend school, as previously the distance had been too far for them to walk. Further funding has given us the opportunity to build more teacher's houses and classrooms and to install bore holes for communities who previously depended on bacteria-infested streams for drinking water. Hundreds more mosquito nets have been distributed for malaria prevention and many more orphans are being sponsored. With over 700,000 orphans nationwide it is imperative to educate and improve the health facilities for these vulnerable children.



The high point for me has been following the progress of the twin boys whose mother tragically died in childbirth along with her baby daughter. The boys are now eighteen months old, happy, healthy and running around Kamwi Village, being cared for by their grandmother. Sadly there are still far too many Zambian children who are suffering, there has been an increase in new cases of malaria and the HIV and AIDS pandemic ravages the community, affecting or infecting every family. Our new peer education program for HIV and AIDS prevention, targeting school children, is underway and this is where we hope the change can be made. We have expanded our malaria prevention program; malaria remains the biggest killer of man. We target children under five, pregnant women and those most at risk.

For the first time we have been able to send twenty school leavers for vocational courses, ranging from teaching, computing and hotel management. The special education class has received recognition from the Provincial Department of Education and is being used as a model for other areas. Very few disabled children in Zambia have access to education. This is the only rural special education unit in the entire nation. The orphan sponsorship program has increased, boosted by the Mukuni Village Fund in Australia, a group of people who sponsor fifty orphans.

In March we were honored to receive a visit from the newly appointed British High Commissioner to Zambia; who wanted to see The Butterfly Tree in operation. We have had an increasing number of visitors to see our projects in Mukuni from individuals, groups and corporate. These visits have generated a substantial amount of income through travel philanthropy and for many it has been the highlight of their entire holiday. Once again a number of volunteers from the UK, Europe, US, Canada and Australia worked at the school, within the community and at the Mukuni Health Centre. Their input has been invaluable. We have global fundraisers, who have raised a considerable amount of money for the charity through various initiatives and sporting activities. One of the main events this year was participating in Cyclothron UK, where our team the 'Flying Butts' did a twelve hour cycle challenge around Brands Hatch.

With so much bad publicity in the charity sector, concerning the amount of money that is deducted for administration and personal fees, we continue to work as volunteers both in the UK and Zambia, enabling all funds raised to go directly into grassroots projects. As always I am grateful to my fellow trustees, David Kaye and Miranda de Freston. Miranda's excellent optimization skills have generated a great deal of support through our website. Also to Ann, who has taken over the role of Treasurer and Mary in administration, Frank Maiolo (our US representative), our volunteers and the many fundraisers who have generously given their time to help and support The Butterfly Tree. This new year we have taken on additions to our team are - Mutsa Marau, as HIV and AIDS Prevention Coordinator, Oscar Miyanda in public relations and Wendy Callaway to assist with the orphan sponsorship program. In Canada we are joined by Grant and Marilee Gibson who will be fundraising and promoting our work.

None of our success could have been achieved without our amazing team in Zambia - Mupotola Siloka, Presley Mulenga, Martin Mushabati, Rosemary Siloka, Sweso Museke and Stain Musengaila, the ten female representatives who oversee the orphan sponsorship program and all the teachers who run the sustainable projects for the schools. They are dedicated, hard-working and professional people who are committed to making the change. Special thanks to Chief Mukuni and several local hotels and lodges, namely Sun International and Stanley Safari Lodge and tour operators who support our work.

Each of our donors around the world deserves enormous thanks; unfortunately it is not possible to name every one of them individually. However I must express gratitude to our major sponsor, the Jersey Overseas Aid Commission, who has given us the opportunity to build schools and clinics in very remote areas. Other major generous sponsors include Saga Charitable Trust, Just a Drop, the British and Foreign School Society and The Besom. Through grant aid their support has funded bore holes, malaria prevention, vocational courses and health facilities. Corporate sponsors Cunninghams, Gardiff, Brady Italia, ENRC Marketing and Canon Australia have given tremendous backing and a special thanks to the BigGive, who doubled our donations through their Christmas Challenge. There are numerous schools, clubs, churches and individuals kindly donating ongoing funds to assist the thousands of orphaned children in Zambia. This coming year with your continued support we aim to reach out to children in the Sikute and Nyawa Chiefdoms.

Jane Kaye-Bailey
Chairman



WHERE WE WORK



ZAMBIA

Population	13.8 million
Life Expectancy	35-42 years
Population living on less than a dollar a day	64%
Population having access to safe water	58%
Population growth rate	3.06

HIV/AIDS IN ZAMBIA

HIV/AIDS Prevalence	17%
Adults with HIV	1,000,000
Children with HIV	130,000
AIDS Orphans	710,000
Deaths from AIDS related causes	45,000
HIV infected people receiving treatment	85%

MALARIA IN SUB-SAHARA AFRICA

- 90% of all malaria deaths occur in sub-Saharan Africa
- 1 in 5 childhood deaths are caused by malaria
- A child dies from malaria every 40 seconds
- Children and pregnant women are most at risk

PROJECTS UNDERTAKEN

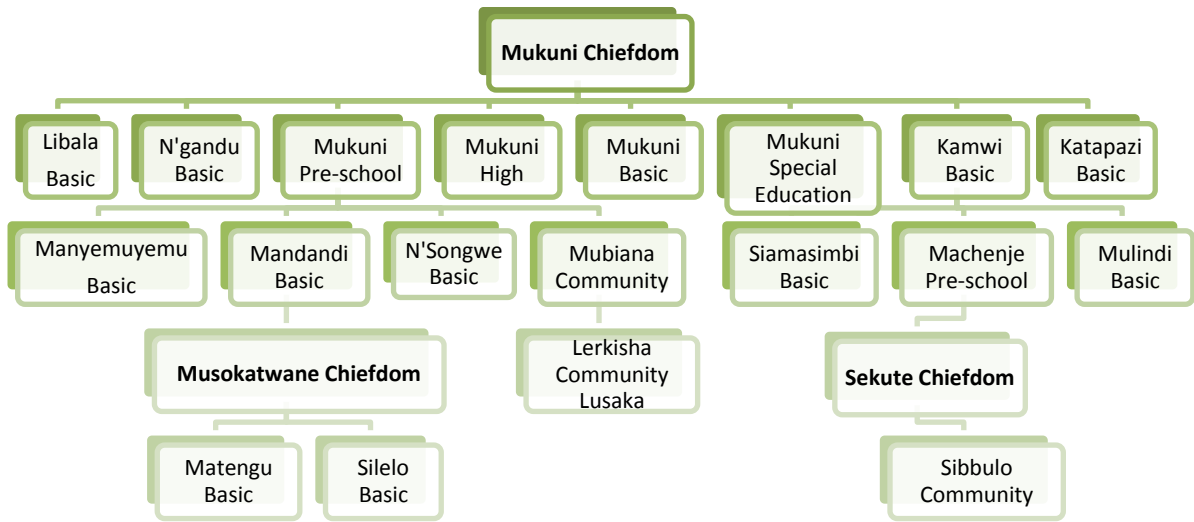
EDUCATION

- ORPHAN SPONSORSHIP PROGRAM – over 500 orphans receiving support
- MUKUNI HIGH SCHOOL – teacher’s house, materials, orphan support, boarder’s shelter
- MUKUNI BASIC SCHOOL – feeding program for 350 orphaned and vulnerable children, stationary, equipment, bicycles, uniform making project, peer education for HIV/AIDS
- MUKUNI SPECIAL EDUCATION – UK teacher exchange, sustainable income-generation
- PRE-SCHOOL – continuation project providing materials and supporting three teachers, 260 children attend three classes throughout the day
- FURTHER EDUCATION – funded 20 school leavers for vocational courses
- TEACHERS’ ACCOMMODATION – completed eight teachers’ houses
- N’GANDU BASIC SCHOOL – new teacher’s house, materials, orphan support, provision of seeds
- KATAPAZI BASIC SCHOOL – equipment and material, seeds
- KAMWI BASIC SCHOOL – orphan support, uniform making, stationary, provision of seeds
- SIAMASIMBI BASIC SCHOOL – educational material, seeds, orphan support
- MANDANDI BASIC – opening of new basic school, materials, provision of seeds
- MACHENJE PRE-SCHOOL – stationary and equipment
- MATENGU COMMUNITY SCHOOL – completion of a basic school, materials, provision of seeds
- SILELO COMMUNITY SCHOOL – completion of a new basic school, materials, provision of seeds
- MALIMA COMMUNITY SCHOOL – completion of a new basic school, materials, provision of seeds
- SUSTAINABLE PROJECTS – school gardens, uniform making



It is reputed that 90 million disabled children worldwide do not have access to education

SCHOOLS SUPPORTED BY THE BUTTERFLY TREE



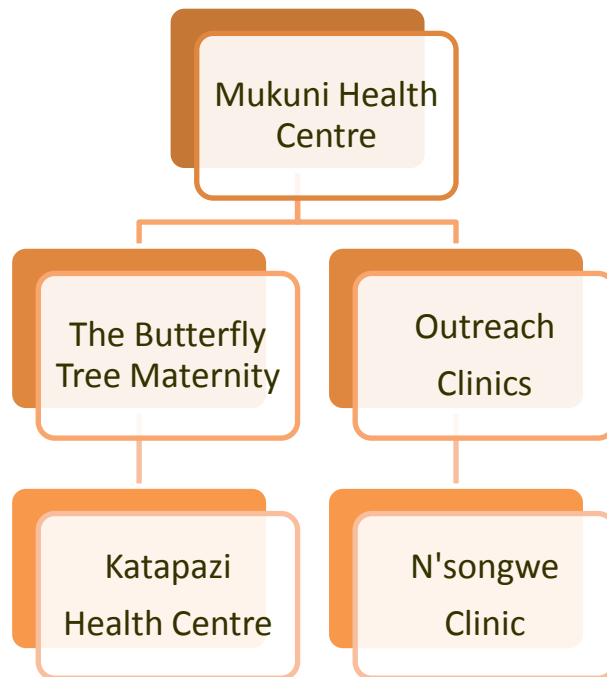
A further new school at Sibbulu Village in the Sikute Chiefdom will be completed in 2012

HEALTH

- **CLINICS** – supporting Mukuni, Katapazi & N’songwe health centres including The Butterfly Tree maternity clinic. The health centres cover a population in excess of 12,000
- **MATERNITY** – The Butterfly Tree maternity clinic has had the addition of a women’s shelter
- **UNDER-FIVE’S FEEDING PROGRAM** – targets babies whose mothers are HIV positive, advising them to wean infants prematurely to reduce mother to child transmission of HIV. All babies on the program have been tested free of HIV since 2007
- **TREATMENT** – again provided funds for a number of sick children to undergo operations, treatment and physiotherapy as well as helping the elderly
- **MALARIA** – provided hundreds of mosquito nets, malaria testing kits and educational workshops
- **HIV/AIDS** – supporting four HIV/AIDS programs: workshops offering voluntary testing, counselling, sensitization programs, educational material, peer-education for HIV/AIDS prevention, funding HIV/AIDS patients, and AIDS orphan support. An event was funded for World AIDS Day
- **TB** – provided funds for educational workshops
- **TESTING KITS** – these have greatly helped in diagnosing malaria and syphilis, both can be treated after early detection
- **MEDICAL SUPPLIES** – provided vast amounts of bandages, dressing, syringes and medical equipment. Supplied clinic beds and birthing kits
- **KAMWI TWINS** – continuation of support for twin boys who’s mother died in childbirth
- **WATER** – improved the water and sanitation facilities at Mukuni Health Centre



CLINICS SUPPORTED BY THE BUTTERFLY TREE



A number of international volunteers have helped throughout the year
A further Health Centre at Mahalululu Village in the Mukuni Chiefdom will be completed in 2012

COMMUNITY

- **WATER** – provided two new bore holes, schools are now able to grow vegetables to supplement the feeding programs. New water pipes at Mukuni Health Centre
- **COMMUNITY HOUSES** – nine more community houses have been provided for the elderly and widows looking after orphans, making a total of sixty built to date
- **SUSTAINABLE PROJECTS** – projects have been initiated for groups, particularly for women to have self-sustainable income generating activities, these include chicken and goat rearing, maize enterprise and sewing, some through micro-financing
- **GOAT FARMING** – goat rearing project for women to raise funds for disabled children.
- **CHICKEN FARMING** – support has been given to groups of women to raise chickens as a sustainable income - generating activity
- **MAIZE FARMING** – through micro-financing a group of women have set up an enterprise buying and selling maize to provide a sustainable income
- **WORLD WOMEN'S DAY** – an event with lunch, attended by the Bedyango, Chieftainess of Mukuni, held on the 8th March for over 100 women at Mukuni Village, hosted by Jane Kaye-Bailey. A competition was offered to groups of women to initiate original sustainable projects; business advice was given to all the participating groups from Wendy Callaway
- **WORLD AIDS DAY** - funded a workshop at Mukuni Village to mark this day
- **WORLD MALARIA** – distributed mosquito and held workshops
- **NATIONAL YOUTH DAY** - as always we made a contribution, this year for the Mukuni boy scouts



COMMUNITIES SUPPORTED BY THE BUTTERFLY TREE

MUKUNI CHIEFDOM

- Mukuni
- N'gandu
- Kamwi
- Machenje
- Siamasimbi
- Katapazi
- Damwa
- Malima
- Ndele
- Kafekwa
- Mandandi
- Libala
- Mulindi
- N'songwe
- Mubiana
- Manyemumyemu
- Mandandi
- Chibule

MUSOKATWANE CHIEFDOM

- Matengu
- Silelo

SIKUTE CHIEFDOM

- Sibbulo

Safe clean water, housing and sustainable community projects have been initiated in these remote villages, in addition to providing improved health and educational facilities



VOLUNTEERS

Every year we have volunteers from all walks of life from many countries around the globe. They participate at their own expense and find accommodation in Livingstone. Among them were the Sydney University Medical students who come annually to work at Mukuni Health Centre. Others included financial professionals, project managers, teachers and students. Mutsa Marau from London spent four and a half months and wrote an invaluable program for HIV prevention through peer education, while Petteri Alppi from Finland wrote Maths and English revision guides.

Other participants built houses and restored the clinic. Advice was given on business management and several volunteers taught in the many classrooms. Teachers from Fountaindale Special Education School in Nottinghamshire held workshops for the entire Province. Once again Margaret Bax and Casey Short returned to supervise their goat's milk project. Most of the volunteers continue to support the charity and for many it has been a life-changing experience.

We encourage sponsored orphans to partake in volunteering, especially school leavers. Jacob Siatubitu volunteers at the clinic and in the community. Margaret Mulenga, whose father is Head Teacher, assisted with the HIV peer education program before attending university in June. Teachers give up their free time to provide sustainable feeding programs and uniform-making projects.

2010-11 Volunteers

Some of the overseas volunteers who helped us at Mukuni:

- Mutsa Marau - peer education for HIV/AIDS prevention
- Australian Medical Students, Sydney University (Australia) - Mukuni Health Centre
- Margaret Bax and Casey Short (US) - goat's milk project
- Petteri Alppi (Finland) - education
- James Ashley - education and community housing
- Shane Cunningham and Nick Boles (Canada) - school & clinic
- Hannah Lainton and Claire Richardson - community projects
- Wendy Callaway - education & community projects
- Fountaindale School teachers - special education



FUNDRAISERS

There were many people using their initiative to raise vital funds for The Butterfly Tree, some of the most noticeable were:

- Mike Kaye, Nigel Birch, Jake Wilson-Gunn and James Blackburn competed in Cyclothon UK
- Saga Travel Employees – raised over £10,000 for bore hole and boarder’s shelter
- ENRC Marketing (Switzerland) employees – raised over £16,000
- Samantha Cohen (US) – orphan education
- Basement Entertainment - fight against malaria event
- Brendan Poynton – raised over £10,000 for a Music Centre in Mukuni Village
- Aurora Health & Beauty – malaria prevention and community housing
- LSR Rotary Club - community houses
- Canon Australia – education
- Brady Italia – health and education
- Wolverton School - orphan sponsorship
- Fountaindale School - special education & sustainable enterprise
- St. Catherine’s School – education
- James Ashley - community houses
- Margaret Bax & Casey Short (US) - goat’s milk project
- Tasmanian Women’s Choir (Australia) - orphan sponsorship
- Mukuni Village Fund (Australia) - sponsoring 50 orphans
- Norton Lindsey Women’s Institute & Parish Church



WAY FORWARD

As always we strive to find new ways to raise funds and awareness to support these remote villages in Zambia. We will be seeking further grants and corporate funding. We will continue to promote philanthropic travel which has generated a substantial amount of funds. The past two years have seen substantial development in the Mukuni, Musokotwane and Sikute Chiefdoms, where we have built four entire new schools and a fifth one is under construction. Therefore it is imperative to create sustainability within these schools so that they are not totally dependent on international aid. This can be achieved through developing schools gardens to provide feeding programs and uniform making projects to generate income.

Each school and many communities where we work now have access to safe, clean drinking water. We will continue to research areas where the people are drinking from bacteria infected streams and rivers and add more bore holes. Malaria is prevalent in all our communities, the use of mosquito nets will be further used for prevention to avoid new cases occurring. To overcome the problems relating to HIV and AIDS we must target school children.

This year will see the addition of a further rural health centre at Mahalululu. Currently pregnant women and sick people have to walk up to fifty kilometres to the nearest clinic. Sadly the under-fives feeding program, to prevent the transmission of HIV and AIDS from mother to child, has had a setback. All the participating infants for the past four years have been free of HIV. The WHO directive now states that HIV positive women must breastfeed infants for two years; therefore we are no longer able to offer formula as an alternative to breast milk. We will provide supplements and support for these vulnerable children.

CHALLENGES

- Accessibility and transport to remote villages
- Transportation vehicle hire and shipping costs
- The ever increasing cost of materials and food
- Insufficient medical and educational supplies
- Lack of safe, drinking water
- Fluctuating exchange rates
- Sourcing new funds
- Creating sustainability
- Under-fives feeding program
- Need for special education

FUTURE OBJECTIVES

As always our focus will be on the orphans in outreach villages. By September we will have completed a new school in a very remote area of the Sikute Chiefdom, ensuring that the children have access to sound education. Our aim will be to create further sustainability for the schools we have developed in the past few years. There have been an increasing number of pupils unable to pay school and examination fees and we will strive to support them. We will source schools in other Chiefdoms, which rely on streams for drinking water, and install bore holes and hand pumps.

Emphasis will be on creating additional peer educators in schools for HIV prevention. We believe that this will have a knock on effect, anticipating a reduction in the number of new cases of HIV. Mukuni Basic School will be a model for other rural schools. We will endeavor to expand the special education program to give children with learning difficulties the right to be educated. The unit at Mukuni can be emulated in other communities where these marginalized children have no access to education. Funds will be sourced to send school leavers to college in view of seeking employment.

To support Zambia in the fight against malaria and to help them reach Millennium Development Goal of near-zero deaths by 2015, we will raise funds to provide mosquito nets to many more outreach villages besides malaria testing kits and educational workshops. When funds are available we will pay for sick children to have surgery and treatment in hospital. With a further rural clinic currently being constructed at Mahalululu, scheduled to be completed by October 2012, more lives can be saved.

The addition of new volunteers in the UK and Canada and many more supporters around the globe, will give us the opportunity to create further awareness of the plight of orphans and issues concerning malaria, HIV/AIDS and lack of safe, clean water in rural areas of Zambia. Our commitment both in the UK and Zambia is to improve the lives of these vulnerable people.

As always we are totally committed to our cause. Our teams of volunteers both in the UK and Zambia are dedicated to making the change and will strive to raise further funds to provide water, food, health and education programs.





We cannot stress enough how grateful we are to our donors, supporters and volunteers and for all of the encouragement and praise we have received. It is both a humbling and a rewarding experience to be able to assist these needy communities, the progress that has been made during the past twelve months has been quite remarkable. As always we have used the funds to the best of our ability and many more children now have access to safe water, feeding programs, healthcare and education. We will continue to help them prevent losing the next generation.

Trustees: Jane Kaye-Bailey (Chairman) David Kaye and Miranda De Freston



**The Butterfly Tree Charity
Statement of Financial Activities
for the year ended 31/03/2012**

	Unrestricted Funds 2012	Total Funds 2012	Prior Period Total Funds 2011
Incoming Resources			
Revenue, grants, legacies & donations	244,985	244,985	271,457
Investment Income			
Total Incoming Resources	<u>244,985</u>	<u>244,985</u>	<u>271,457</u>
Net Incoming Resources available for charitable applications A	<u>244,985</u>	<u>244,985</u>	<u>271,457</u>
Cost of activities in furtherance of the charity's objectives	224,678	224,678	275,320
Support costs of activities	8,745	8,745	17,707
Management and administration of the charity	1,046	1,046	1,667
Total Resources expended B	<u>234,470</u>	<u>234,470</u>	<u>294,695</u>
Net Incoming Resources before Transfers (ie Total A minus Total B)	10,515	10,515	(23,238)
Gross Transfers between funds-	-	-	-
Net Incoming Resources before revaluations and investment asset disposals	<u>10,515</u>	<u>10,515</u>	<u>(23,238)</u>
Total funds brought forward	14,089	14,089	37,327
Total funds carried forward	<u>24,604</u>	<u>24,604</u>	<u>14,089</u>

The net movement in funds referred to above is the net incoming resources as defined in the Statement of Recommended Practice for Accounting and Reporting issued by the Charity Commissioners for England & Wales and is reconciled to total funds as shown on the Balance sheet, as required.

All activities derive from continuing operations

The notes and schedule to the Statement of financial activities form an integral part of these accounts

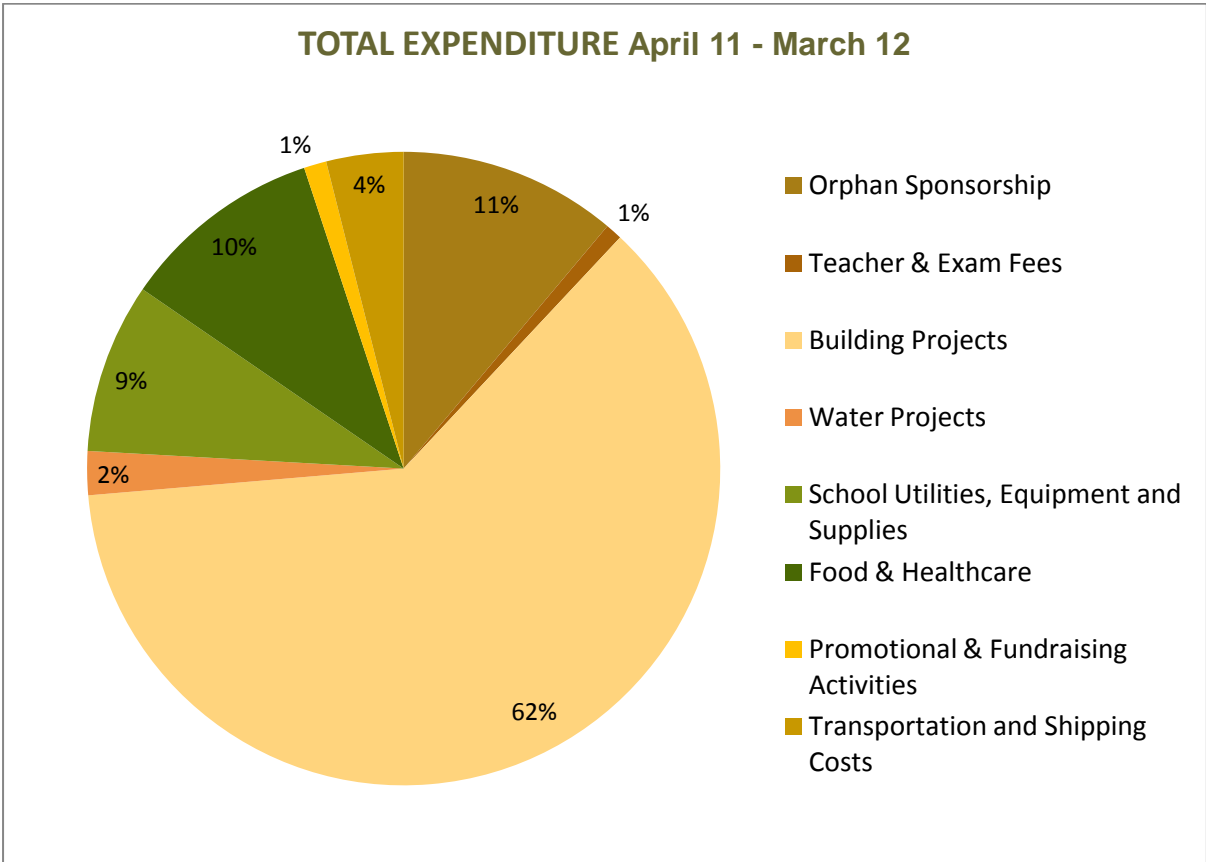
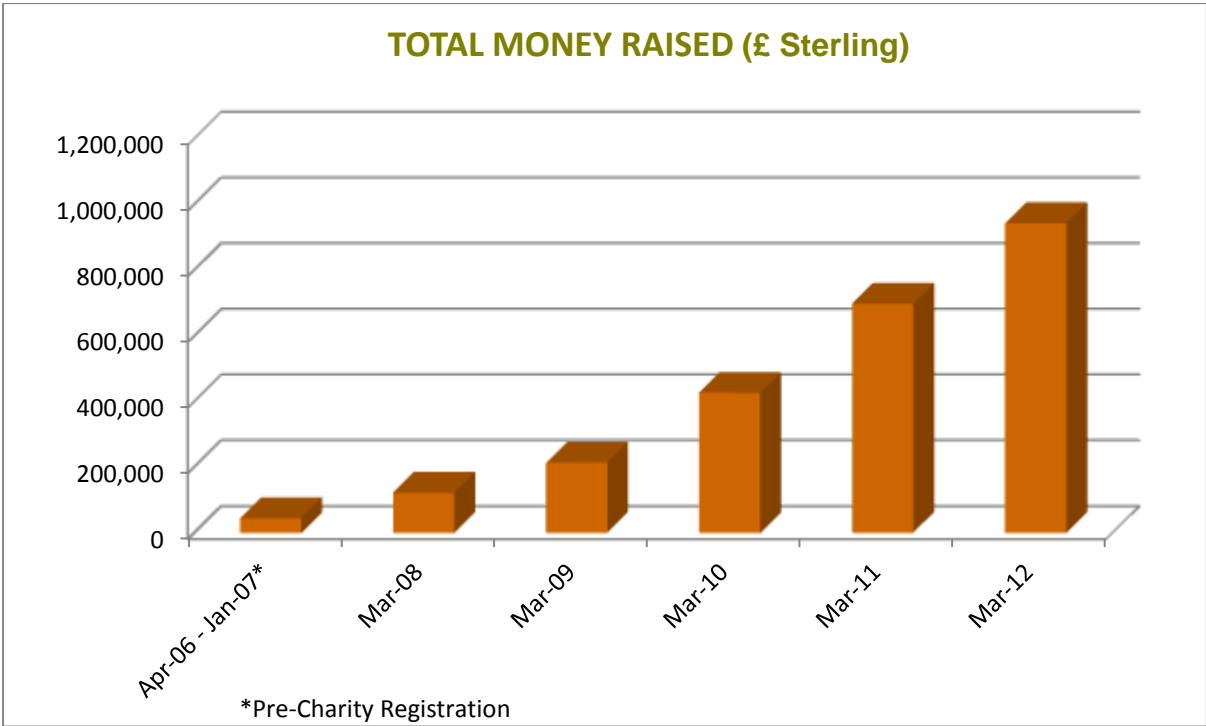
Statement of Total Recognised Gains and Losses
for the period from 1 April 2011 to 31 March 2012

	2012	2011
Excess of income over expenditure	10,515	(23,238)
Net Movement in funds before taxation	<u>10,515</u>	<u>(23,238)</u>

The Butterfly Tree Charity
Statement of Financial Activities
for the year ended 31/03/2011

Movements in revenue and capital funds
for the period from 1 April 2011 to 31 March 2012

Revenue accumulated fund	Unrestricted Funds 2012	Total Funds 2012	Last year Total Funds 2011
Accumulated fund brought forward	14,089	14,089	37,327
General Funds	10,515	10,515	(23,238)
Special Funds	-	-	-
Closing Accumulated fund	24,604	24,604	14,089





THE BUTTERFLY TREE ORPHAN SPONSORSHIP PROGRAM

‘As young butterflies emerge from their pupae, they are placed in a tree, where their wings can continue to develop. Then they are released into the wild’.



Registered charity no. 1118084
3 Gannaway Court, Norton Lindsey, Warwick CV35 8JR
Tel: 44 (0) 1926 843699 Fax: 44 (0) 1926 843879
Email: jane@thebutterflytree.org.uk
www.thebutterflytree.org.uk