

THE BUTTERFLY TREE

**UK CHARITY & NON-GOVERNMENT ORGANISATION
HELPING RURAL COMMUNITIES IN ZAMBIA**



ANNUAL REPORT 2012 -2013

UK Charity No 1118084

FROM THE CHAIR...

As always it is a pleasure to report on the progress The Butterfly Tree is making amongst the rural communities in the Southern Province of Zambia. I am delighted to say that our fundraising efforts topped the one million pound mark during this financial year. In addition we have donated thousands of pounds worth of medical supplies, equipment, educational material, books, sports apparatus, clothing and blankets to areas of most need.

In June 2012 we were contacted by the British High Commission in Lusaka, informing us that we were to receive a visit from the Princess Royal. HRH was to represent her Majesty the Queen during a tour of Zambia, as part of the Diamond Jubilee celebrations. It was such a boost for our small charity to hear this tremendous news. All the hard work of our volunteers, both in the UK and Zambia, had been acknowledged. The team and the Mukuni people spent weeks tirelessly preparing for the occasion. We funded the restoration of the schools and health centre, adorned the buildings with flags and beautiful murals painted by a local artist and school pupils provided the entertainment.

When the morning finally arrived I waited at the school to welcome Her Royal Highness. I was so moved by the site of more than 1000 children lining the track as the Royal party approached the entrance. All our work revolves around orphaned and vulnerable children and I felt a huge sense of pride as I related the story of The Butterfly Tree to HRH. I highlighted the orphan sponsorship program, the special education class and the maternity clinic, all of which the Princess had chosen to see. It was a truly memorable day for everyone concerned. At the end of the visit I received a wonderful compliment when HRH turned to me and said 'Working with orphans is difficult, but you seem to have got it right.'



After all the excitement it was back to work as usual. During the year we opened a fifth school and started construction of a new health centre. This was thanks to the Jersey Overseas Aid Commission, our major donor, who has helped us to advance the health and education in a number of villages.

We continue to seek schools that are in desperate need of support. Two of main priorities are to ensure that they each school has a supply of safe, clean water and seeds to enable them to provide sustainable feeding programs. At Mukuni Village over 400 pupils are fed daily and over 500 orphans and vulnerable children are being individually sponsored. There are now two boarding shelters housing forty pupils - before these facilities were added most of them were walking up to ten miles each way to get to school. We have funding in place for two further special education units for children with special needs who cannot attend school as there are no facilities.

In the health sector The Butterfly Tree received increased funding for malaria prevention and distributed vast quantities of mosquito nets in the Mukuni and Sikute Chiefdoms. We continue to provide ongoing support for HIV problems, which persistently ravage the communities. This is done through the funding of workshops, particularly amongst the school children. What I find so distressing is dealing with infants who are HIV positive and sick children who are unable to seek medical attention because of the costs involved. We assist as many as possible and no doubt having the new clinic at Mahalulu will help a great deal.

The amount of need can be overwhelming at times, but what is encouraging is the tremendous global support we are now receiving. Thanks to Miranda's amazing optimization skills and the images and stories portrayed on our website, the charity has attracted people from all over the planet. I meet many visitors in Zambia and take them to see our projects at Mukuni whenever the opportunity arises. This has great results and encourages people to donate - some have funded bore holes while others offer to support orphans. We have extensively promoted travel philanthropy and volunteering to attract more visitors. The charity was shortlisted for the best Responsible Tourism website for the Travel Mole 2012 web awards. The website has attracted donors from the US, Canada, Australia, Asia and Europe as well as the UK. What appeals most to donors is the fact that we have no administration costs and that all members both here and in Zambia are volunteers.

I am amazed and extremely grateful that I have had the same team working with me since 2006. I would like to thank David and Miranda, my fellow trustees, Ann, Mary, Mutsa, Wendy, and Oscar for giving up their spare time to help the charity. I cannot thank enough my wonderful team in Zambia - working alongside them I have seen each member's commitment in helping their people to have a better future. Some of the areas we support are incredibly remote with limited access and prove at times to be exceptionally challenging. This does not deter Mupotola, Presley and Martin who never give up! Rosemary, Sweso, Stain, Jacob, the ten women who oversee the orphan sponsorship program, teachers and four cooks who daily feed over 400 children each does a remarkable job. Without their dedication The Butterfly Tree would not have been able to achieve so much. I would also like to thank Chief Mukuni for his counsel and the local tour operators, hotels and lodges, namely Sun International who supports our work in Zambia.

We now have so many donors around the world that it is impossible to list them all. However I wish to express my gratitude to our major sponsor, the Jersey Overseas Aid Commission, who for four years gave us the opportunity to build entire new schools and clinics in these outreach areas. Our other major donors Saga Charitable Trust, Just a Drop, the British and Foreign School Society and The Besom have also given us substantial funds over several years. Through grant aid their support has funded bore holes, malaria prevention, classrooms, vocational courses and health facilities. Corporate sponsors Cunninghams, Brady Italia, ENRC Marketing AG and Black and White Accounting continue to generously support our cause. A special thanks to the BigGive, who doubled our donations through their Christmas Challenge. We are grateful to all the schools, clubs, churches and individuals who donate ongoing funds and the abundance of fundraisers who have climbed Mt Blanc, cycled round Brands Hatch and ran around Premier League rugby pitches! We very much appreciate your trust and incredible generosity that has helped to provide vital funds for our water, food, health and education projects in Zambia.

Jane Kaye-Bailey
Chairman



WHERE WE WORK



ZAMBIA

| | |
|---|--------------|
| Population | 14.8 million |
| Life Expectancy | 43 years |
| Population living on less than a dollar a day | 64% |
| Population having access to safe water | 35% |
| Population having inadequate sanitation | 50% |
| Deaths in children caused by diarrhoea | 5000 |
| Population growth rate | 2.89 |

HIV/AIDS IN ZAMBIA

| | |
|---|---------|
| HIV/AIDS Prevalence | 12.5% |
| Adults with HIV | 800,000 |
| Children 0 -14 with HIV | 170,000 |
| AIDS Orphans | 680,000 |
| Deaths from AIDS related causes | 31,000 |
| HIV infected people receiving treatment | 85% |

MALARIA IN SUB-SAHARA AFRICA

- 90% of all malaria deaths occur in sub-Saharan Africa
- 1 in 5 childhood deaths are caused by malaria
- Every 60 seconds a child dies from malaria
- Children and pregnant women are most at risk

PROJECTS UNDERTAKEN

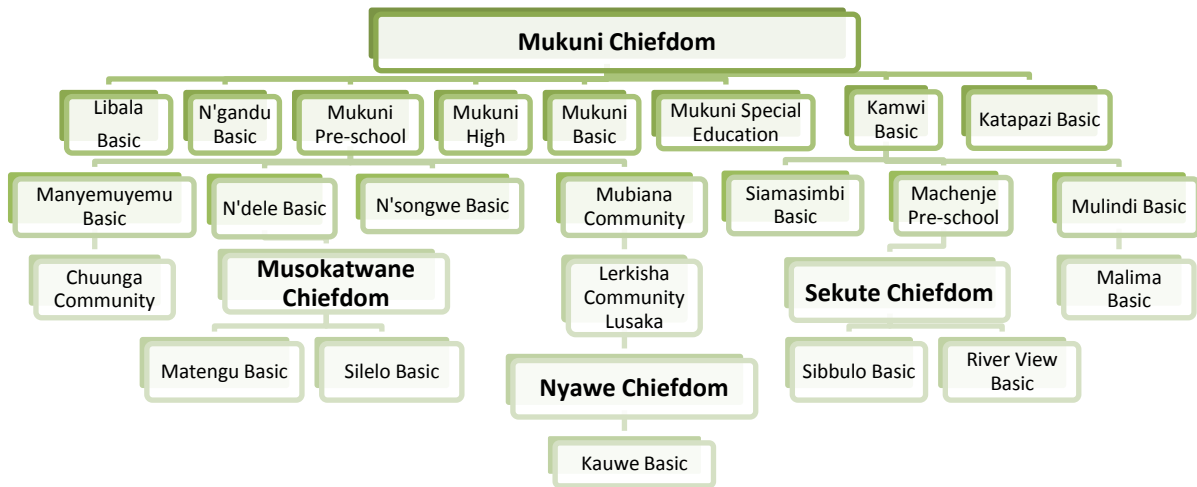
EDUCATION

- ORPHAN SPONSORSHIP PROGRAM – over 500 orphans from five schools
- MUKUNI HIGH SCHOOL – materials, orphan support, boarder’s shelter
- MUKUNI BASIC SCHOOL – feeding program for 400 orphaned and vulnerable children, two boarders’ shelters, stationery, uniform making project, peer education for HIV/AIDS
- MUKUNI SPECIAL EDUCATION – UK teacher exchange, sustainable income-generation
- MUKUNI PRE-SCHOOL – attended by 240 children, supporting three teachers
- FURTHER EDUCATION – 3 students on teacher’s training courses
- KINDLES FOR SCHOOLS – provided for Mukuni schools and Lubasi Orphanage
- N’GANDU BASIC SCHOOL – materials, orphan support, provision of seeds
- KATAPAZI BASIC SCHOOL – equipment and material, provision of seeds
- KAMWI BASIC SCHOOL – orphan support, stationery, provision of seeds
- SIAMASIMBI BASIC SCHOOL – educational material, seeds, orphan support
- NDELE BASIC – uniform making, materials, provision of seeds, orphan support
- MACHENJE PRE-SCHOOL – supporting two teachers, stationery and equipment
- SIBBULO COMMUNITY SCHOOL – opening of a new school, materials, provision of seeds
- CHUUNGA COMMUNITY SCHOOL – classroom funding, materials, provision of seeds
- MALIMA COMMUNITY SCHOOL – opening of a new school, materials, provision of seeds
- RIVER VIEW BASIC SCHOOL – special education unit under construction
- SUSTAINABLE PROJECTS – school gardens, uniform making



It is reputed that 90 million disabled children worldwide do not have access to education

SCHOOLS SUPPORTED BY THE BUTTERFLY TREE



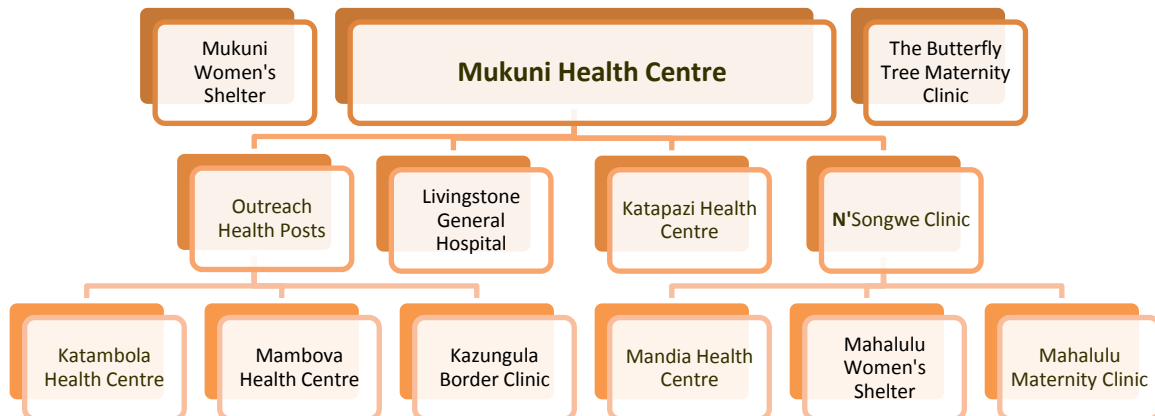
More classrooms, a sustainable school shop and two special education units will be completed in 2013

HEALTH

- **CLINICS** – supporting Mukuni, Katapazi & N’songwe health centres, including The Butterfly Tree maternity clinic. These centres cover a population in excess of 12,000. An entire new clinic at Mahalulu with maternity, women’s shelter, 3 staff houses, bore hole and latrines opening shortly
- **MATERNITY** – The Butterfly Tree maternity clinic and women’s shelter at Mukuni. A new women’s shelter to be constructed for Mambova clinic
- **UNDER-FIVE’S FEEDING PROGRAM** – assists orphaned and under-nourished infants and mothers who are unable to breastfeed, provision of formula and vitamin supplements
- **TREATMENT** – provided funds for a number of sick children to undergo operations, attend eye clinics and receive treatment and physiotherapy.
- **MALARIA** – provided thousands of mosquito nets, malaria testing kits and educational workshops in the Mukuni Chieftdom and distributed mosquito nets to five clinics in the Sikute Chieftdom.
- **HIV/AIDS** – supporting four HIV/AIDS programs: workshops offering voluntary testing, counselling, sensitization programs, educational material, peer-education for HIV/AIDS prevention, funding HIV/AIDS patients, and AIDS orphan support. An event was funded for World AIDS Day
- **MEDICAL SUPPLIES** – provided vast amounts of bandages, dressing, sanitizing and medical equipment.
- **KAMWI TWINS** – continuation of support for twin boys who’s mother died in childbirth
- **ORPHANED INFANTS** – sponsorship provided
- **WATER & SANITATION** – added two new boreholes and 3 double and three single latrines



CLINICS SUPPORTED BY THE BUTTERFLY TREE



COMMUNITY

- **WATER** – provided two new bore holes, in addition to having safe drinking water schools are able to grow vegetables to supplement feeding programs.
- **SANITATION** – installed a number of latrines in schools and clinics
- **COMMUNITY HOUSES** – a further six community houses have been constructed for the elderly and widows looking after orphans, making a total of sixty-six built to date
- **SUSTAINABLE PROJECTS** – projects have been initiated for groups, particularly for women to have self-sustainable income generating activities, these include chicken and goat rearing, vegetable growing and sewing
- **GOAT FARMING** – goat rearing project for women to raise funds for disabled children. In addition we have assisted the Carly Elizabeth goat's milk project in operation at Mukuni and Machenje
- **CHICKEN FARMING** – support has been given to groups of women to raise chickens as a sustainable income - generating activity
- **MAIZE FARMING** – the charity provided funds to help communities grow maize after their crops had been destroyed by army worms in December
- **WORLD WOMEN'S DAY** – Jane Kaye-Bailey hosted a lunch and workshop for 100 women at Mukuni Village, attended by the Mukalya, the wife of Chief Mukuni, on 8th March. The theme was 'The Gender Agenda', which included topics on violence against women and problems relating to HIV/AIDS as well as the issue of teenage pregnancies
- **WORLD AIDS DAY** – funded lunch and workshop to spread awareness about the dangers of HIV



COMMUNITIES SUPPORTED BY THE BUTTERFLY TREE

MUKUNI CHIEFDOM

Mukuni Chiefdom is just seven kilometers from the Victoria Falls and sixteen from Livingstone. There are over 100 villages with a population in excess of 17,000. In addition to building schools and clinics we support many ongoing projects in the Mukuni Chiefdom

- Mukuni
- N'gandu
- Kamwi
- Machenje
- Siamasimbi
- Katapazi
- Damwa
- Malima
- Ndele
- Chibale
- Kafekwa
- Mandandi
- Libala
- Mulindi
- N'songwe
- Mubiana
- Manyemumyemu
- Mandandi
- Chibule
- Chuunga

MUSOKATWANE CHIEFDOM

Musokotwane Chiefdom spreads from north of Livingstone towards Kaloma. It has over 400 villages and the main source of income is farming. Two entire new schools have been provided by the charity

- Matengu
- Silelo

SIKUTE CHIEFDOM

Sikute Chiefdom lies between Livingstone and the Kazungula Border. Safe clean water, housing and sustainable community projects have been initiated in these remote villages, in addition to providing improved health and educational facilities and supplies

- Sibbulo
- Mandia
- Mambova
- Katambola

NYAWE CHIEFDOM

Advancement will shortly commence in the Nyawe Chiefdom with the addition of three new bore holes. This Chiefdom is more under-developed than most, villages have poor access, especially during the rainy season. We will be travelling over 200 kilometers from our base at Mukuni Village.



ROYAL VISIT

The highlight of The Butterfly Tree year was the visit from HRH Princess Royal, the Princess Anne as part of the Commonwealth visits to celebrate Her Majesty the Queen's Diamond Jubilee. On the 28th September HRH arrived at Mukuni Village, accompanied by the British Commissioner, and welcomed by more than 1000 children, teachers and tourists. It was an absolute privilege to host such an occasion and a truly memorable day for both the charity and the community.





HRH visited the Special Education Class and The Butterfly Tree Maternity Clinic

VOLUNTEERS

Every year we have volunteers from all walks of life. This year nurses, teachers and project managers from the UK, US, Australia and South Korea assisted at the clinic and schools. Among them were the Sydney University Medical students who come annually to work at Mukuni Health Centre. Mutsa Marau from London returned in March accompanied by Tope Medupin, to continue her program for HIV prevention through peer education. They also included a workshop to tackle the problem of teenage pregnancies.

Other volunteers came back to Zambia to assist in the classrooms and clinic while some participants built houses and restored the clinic. The teacher exchange program with Fountaindale Special Education School in Nottinghamshire continues to flourish. Margaret Bax and Casey Short's goat milking project has now extended to Machenje Village. This provides nutrition for under-nourished children. A number of volunteers, after leaving Zambia, continue to support the charity.

For the forthcoming year we are inviting school leavers to volunteer and help us to initiate a sustainable project. The aim is to create income-generating projects to provide much needed funds for their families and the communities.

2012-13 Volunteers

Some of the overseas volunteers who helped us at Mukuni:

- Mutsa Marau & Tope Medupin - peer education for HIV/AIDS prevention
- Australian Medical Students, Sydney University (Australia) - Mukuni Health Centre
- Margaret Bax and Casey Short (US) - goat's milk project
- Sooji Kim (South Korea) - project analysis
- Charlotte Futcher - Mukuni Health Centre
- Alissa Potter - Kamwi Basic School
- Fountaindale School Teachers - Special Education



FUNDRAISERS

There were many people using their initiative to raise vital funds for The Butterfly Tree, some of the most noticeable were:

- Mike Kaye, Nigel Birch, James Blackburn and Richard Harrison competed in Cyclothon UK
- Saga Travel Employees - raised over £15,000 for mosquito nets a boarder's shelter & special education unit
- ENRC Marketing AG (Switzerland) employees - raised over £6,000 for special education unit
- Brady Italia - health and education
- Magnus Scaddon climbed Mont Blanc - money donated to Mukuni High science laboratory
- Brendan Poynton - raised further funds for music centre in Mukuni Village
- Grant & Marilee Gibson (Canada) - bore hole & malaria prevention
- Gottlieb Family - Lubasi Orphanage & Kindles
- Mutsa Marau & Tope Bedupin – HIV Prevention
- LSR Rotary Club - community houses
- Fountaindale School - special education & sustainable enterprise
- Wolverton School - orphan sponsorship
- St. Catherine's School - education
- Prana Zambia - Yoga Aid challenge
- Richard & Anna Fearon - donated their wedding gifts to support three orphans
- Margaret Bax & Casey Short (US) - goat's milk project
- Tasmanian Women's Choir (Australia) - orphan sponsorship
- Mukuni Village Fund (Australia) - sponsoring 50 orphans
- Prana Lodge Zambia - raised money through the Yoga Aid Challenge
- Norton Lindsey & Bearley Parish Churches
- John McGhee - food program
- Solihull Inner Wheel Club



WAY FORWARD

Zambia still remains one of the poorest countries on the planet. Despite the increase in tourism two-thirds of the population are still living below the poverty line and villages are lacking in basic needs. Rural schools and clinics receive very little government funding and without our support a number of them would close.

We need to step up the support for malaria and HIV/AIDS prevention through the provision of mosquito nets, malaria testing kits and educational workshops. Prevention is the only way until a cure is found for malaria and HIV. By the end of July we will have completed Mahalulu Health Centre and a women's shelter in Mambova. We will continue to source funds to help orphaned, vulnerable and sick children.

Additional bore holes need to be constructed so that children no longer have to drink from bacteria-infected streams and crocodile infested rivers. Sanitation in schools also needs to be improved.

To enable us to reach out to new areas it is imperative that we encourage the communities we are already supported to become more sustainable. This can only be achieved once they have access to safe drinking water and provision of basic healthcare and education facilities. To alleviate hunger more food needs to be produced for school feeding programs and the communities at large.

We will further promote our volunteer program and travel philanthropy. This not only generates income but helps to spread awareness. Business incentive groups, school trips and individuals can have a 'hands on' experience while visiting this stunning area of Zambia, which is close to the mighty Victoria Falls. The benefits for both the volunteer and community can be life-changing.

Our aim for the future is to create an Ecotourism project for school leavers to have a sustainable income-generating enterprise. This long-term project will be achieved by involving the tourism industry, sourcing and selling local products, recycling, tree planting, conservation and wildlife. Our goal is to have an Ecotourism Centre that will attract visitors from all over the world.



CHALLENGES

- Accessibility and transport to remote villages
- Transportation hire and need of a having our own vehicle
- The ever-increasing cost of fuel, materials and food
- Under-nourished children and hunger
- Lack of schools and healthcare facilities
- Insufficient medical and educational supplies
- Lack of safe, drinking water
- Fluctuating exchange rates
- Poor crop yield due to lack of rain
- Need for further special education units
- Creating sustainability
- Sourcing new funds



FUTURE OBJECTIVES

Education is the key so long as the essentials - safe water, sufficient food, healthcare and education facilities are in place. A new 1x2 classroom block, a sustainable school shop and two special education units will shortly be completed. Special education is non-existent in rural villages and this something we want to expand on after the success of the one at Mukuni.

Three new bore holes are to be installed and many more are needed, especially in the Nyawe Chiefdom. This area has had very little development due to its remoteness and has a high prevalence of malaria. At Kauwe Health Centre every week six new cases of malaria are reported. We are adding more latrines at school to improve the sanitation facilities. Diarrhoeal diseases are common amongst all age groups, but can be fatal in infants.

Livingstone area has one of the highest statistics of HIV in Zambia and unfortunately being so close to town Mukuni is incredibly high. Sadly it will be a whole generation before a significant improvement is made but we will continue to target school children as they are the ones to make the change. We will also persist with reducing the number of teenage pregnancies, empowering girls and encouraging them to complete their education.

As always we are totally committed to our cause. Our teams of volunteers both in the UK and Zambia are dedicated to making the change and will strive to raise further funds to provide water, food, health and education programs.



'They only need the essential in life - WATER FOOD HEALTH EDUCATION'



We cannot stress enough how grateful we are to our donors, supporters and volunteers for all the help, encouragement and praise we have received. It is both a humbling and rewarding experience to be able to assist these needy communities, the progress that has been made during the past twelve months has been quite remarkable. As always we have used the funds to the best of our ability and many more children now have access to safe water, feeding programs, healthcare and education. We will continue to help them prevent losing the next generation.

Trustees: Jane Kaye-Bailey (Chairman) David Kaye and Miranda De Freston



Charity Accounts from 1st April 2012 to 31st March 2013

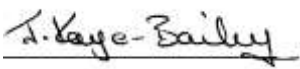
| | <u>£'s</u> |
|--------------------------------------|----------------------|
| INCOME | |
| Donations, Sponsorship & Fundraising | 154,926 |
| | <u>154,926</u> |
| EXPENDITURE | |
| Orphan Sponsorship | 37,574 |
| Teacher & Boarding Fees | 3,240 |
| Building Projects | 57,215 |
| Other Projects | 3,670 |
| School Equipment | 3,414 |
| Supplies | 275 |
| Food & Healthcare | 38,756 |
| Promotional Activities | 1,352 |
| Transportation | 6,980 |
| Miscellaneous | 1,316 |
| Bank Charges | - |
| Admin fees | - |
| | <u>153,792</u> |
| Surplus for the year | 1,134 |
| Reserves brought forward | 24,604 |
| RESERVES REMAINING | <u><u>25,738</u></u> |

These accounts have been prepared on a 'receipt and expenditure' basis, with the information provided.

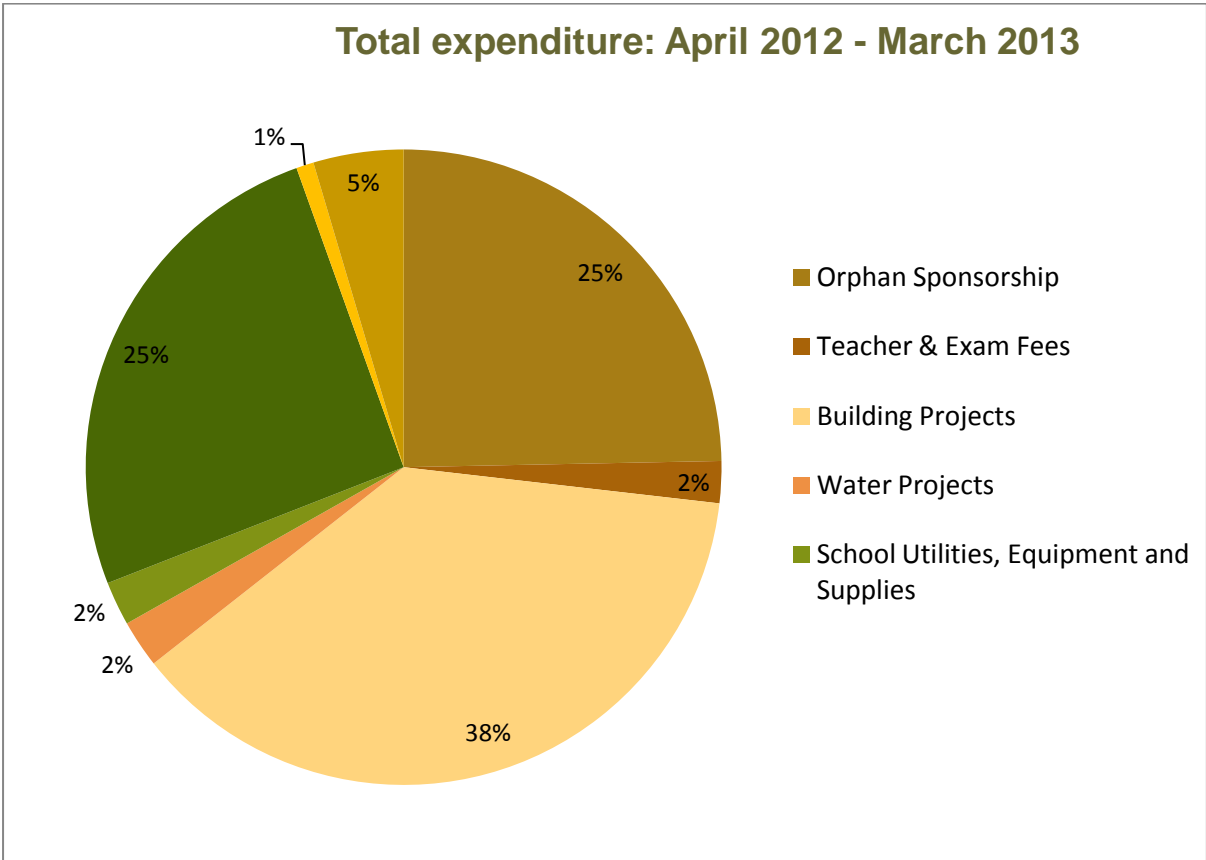
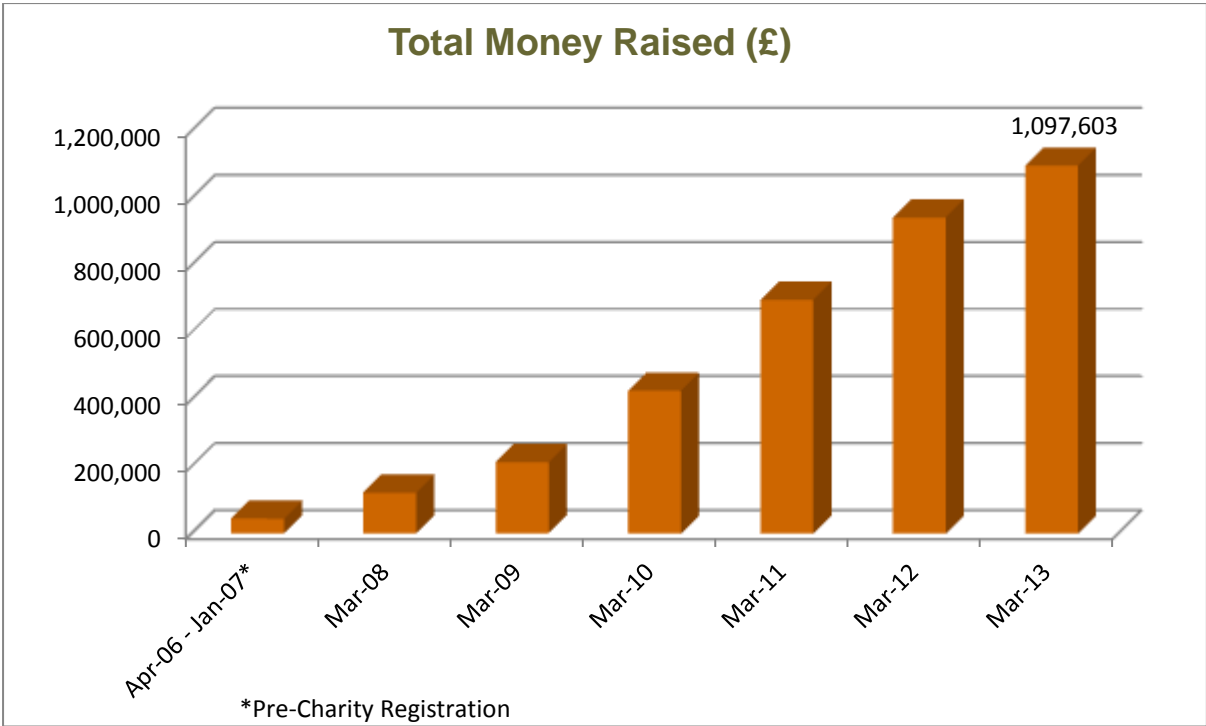
Signed: 

Date: 20/06/2013

As trustee of The Butterfly Tree charity I hereby approve the above accounts and confirm that all necessary information was provided in order that they be completed accurately.

Signed: 

Date: 20/06/2013



We would like to thank Accountax of Stratford-upon-Avon for once again verifying the accounts.



'THANK YOU TO ALL THE BUTTERFLY TREE SUPPORTERS'





THE BUTTERFLY TREE ORPHAN SPONSORSHIP PROGRAM

‘As young butterflies emerge from their pupae, they are placed in a tree, where their wings can continue to develop. Then they are released into the wild’.



Registered charity no. 1118084
3 Gannaway Court, Norton Lindsey, Warwick CV35 8JR
Tel: 44 (0) 1926 843699 Fax: 44 (0) 1926 843879
Email: jane@thebutterflytree.org.uk
www.thebutterflytree.org.uk