

THE BUTTERFLY TREE

UK CHARITY & NON-GOVERNMENT ORGANISATION
HELPING RURAL COMMUNITIES IN ZAMBIA



ANNUAL REPORT 2013 -2014

UK Charity No 1118084

FROM THE CHAIR...

Once again I am delighted to say that The Butterfly Tree had a very successful year. I have been overwhelmed by the tremendous support we received from all over the world and amazed that people from several foreign countries chose to volunteer for our charity. We advanced several rural schools and initiated more feeding programmes as well as providing vital funds for malaria and HIV prevention. We are now reaching out to remote communities some 200 kilometers from our base at Mukuni Village, many of which receive virtually no other international aid.

The most essential of all our projects is to provide a source of water for schools. To see safe, clean water flowing from a hand pump, after a borehole has been installed, always makes me emotional, especially when the only source of water was from a bacteria-infested well or stream. Two new boreholes have been added with three more planned for this year. In addition we have constructed a number of latrines to improve the sanitation in schools.

Helping to improve the facilities in these remote schools has given the children hope of a better future. At the villages of Chuunga, Manyemumyemu and Muchambile additional classrooms and teachers' houses have been added to their schools. River View and Katapazi saw the completion of two special education units, adding to the one at Mukuni and a further one scheduled for Simango. Most rural children with special needs have no access to education.

Our largest school at Mukuni Village, with over one thousand pupils, had an excellent year. The addition of two extra classrooms reduced the number of pupils per class and added extra teaching hours to the day. A sustainable school shop providing uniforms, stationery and tuck, started making profits after just four months. A further school shop is to be opened at Muchambile. Lack of text books has always been a huge issue; ten schools received a substantial amount of books, this contributed to the fact that Mukuni Basic School got the best grade seven and nine examination results in the Kazungula District.

The boarding shelters at Mukuni were extended and bunk beds and mattresses donated. This has enabled pupils from outreach villages to forego the long daily walks to school and has also allowed those who live in extremely remote areas to attend a high school.

As always our orphan sponsorship is at the forefront. Children who have lost one or both parents are being helped with their education. With over 710,000 orphans nationwide it is imperative for them to not only receive basic education but also to learn about the dangers of HIV and AIDS. Mutsa Marau returned to Zambia to train more peer educators on HIV prevention and education on sexual health. A number of orphans have now completed school, five of them are being sponsored at teachers' training college and one at an agricultural college. Some of our orphans are now employed in security, customs and teaching.



The Butterfly Tree continues to provide funds for malaria prevention with the distribution of mosquito nets and educational workshops. This year Nyawe Chiefdom was the beneficiary. Sadly there has been a substantial increase in new cases of malaria throughout the Kazungula district due to lack of spraying and insufficient provision of nets. We are working with Biotech International, a UK corporate to bring two safe new products into Zambia for malaria prevention in the forthcoming months.

Whenever possible we provide funds for sick children to be treated in hospital. We have built a women's shelter at Mambova Health Centre and continue to support both maternity care and under-fives clinics. The CEF goat project funded by two of our US volunteers continues to provide goat's milk for vulnerable infants and children.

Six community houses have been built for widows and the elderly looking after orphans with funding in place for four more. Initiating community projects is an essential part of development and our aim is to establish these for school leavers who cannot afford to go to college. In July I was accompanied by an Ecotourism consultant from Costa Rica, in view of setting up a sustainable project in Mukuni Village. This is a prime area, just seven kilometers from the renowned Victoria Falls and the perfect location to create an income-generating enterprise for the educated school leavers.

Volunteers have come from all over the world to help us! Some taught at the Mukuni schools and worked at the clinic, while others, including two school groups, helped to paint classrooms and build community houses and a school shop. I am delighted to say that five of these volunteers have joined The Butterfly Tree team: Carolyn Howe, who now manages the volunteer programme, Emma Kennedy is to run the orphan sponsorship programme and Jonathan Sedo, from Costa Rica, will develop the Ecotourism project. In addition From New Jersey, Bob and Cindy Orr from New Jersey are to fundraise for our educational projects. We are very grateful to all of them for offering their free time to support The Butterfly Tree.

It is mainly because of our wonderful volunteers that the charity has been able to achieve so much. It is an inspiration to me to have so much help from so many selfless people. I would like to thank David and Miranda, my fellow trustees, for serving on the board with me. I have to say a huge thanks to Ann, who does a remarkable job with the accounts. I am also grateful to Mutsa and Oscar for their support in HIV and malaria prevention respectively, and Frank, Margaret and Casey, our US volunteers who have been a great support.

As always I am totally in awe of my amazing team in Zambia, most especially Mupotola, Martin and Presley and sincerely thank them for all that they have done for The Butterfly Tree and their community. The tireless commitment has enabled us to initiate water, food, health and education projects in remote areas in four Chiefdoms, spanning a radius of two hundred kilometers. Rosemary, Sibeso, Stain, Jacob and the ten women orphan representatives and the volunteer cooks have all contributed to our success. I would also like to thank Chief Mukuni for his counsel and the local tour operators, hotels and lodges, namely Sun International, and Safpar who support our work in Zambia.

We now have so many donors around the world that it is impossible to list them all. However I wish to express my gratitude to our major sponsor, the Jersey Overseas Aid Commission, who have given us the opportunity to build entire new schools and clinics in these outreach areas. Our other major donors Saga Charitable Trust, Just a Drop, the British and Foreign School Society, and The Besom have also given us substantial funds over several years. Through grant aid their support has funded bore holes, malaria prevention, classrooms, vocational courses and health facilities. Corporate sponsors Cunninghams, Brady Italia, ENRC Marketing AG, Dative Studios and Black and White Accounting continue to generously support our cause. A special thanks to the BigGive, who matched donations through their Christmas Challenge and the Mukuni Village Fund, Australia, who sponsor fifty orphans.

In October a great opportunity arose when we were invited by the Silicon Valley Community Foundation to be listed as one of their charities. The forthcoming year has some exciting prospects in the making, most importantly the new malaria prevention projects and further development in rural schools.

Jane Kaye-Bailey
Chairman



WHERE WE WORK



ZAMBIA

Population	14.8 million
Life Expectancy	43 years
Population living on less than a dollar a day	64%
Population having access to safe water	35%
Population having inadequate sanitation	50%
Deaths in children caused by diarrhoea	5000
Population growth rate	2.89

HIV/AIDS IN ZAMBIA

HIV/AIDS Prevalence	12.5%
Adults with HIV	800,000
Children 0-14yrs with HIV	170,000
AIDS Orphans	680,000
Deaths from AIDS related causes	31,000
HIV infected people receiving treatment	85%

MALARIA IN SUB-SAHARA AFRICA

- 90% of all malaria deaths occur in sub-Saharan Africa
- 1 in 5 childhood deaths are caused by malaria
- Every 60 seconds a child dies from malaria

- **Children and pregnant women are most at risk**

PROJECTS UNDERTAKEN

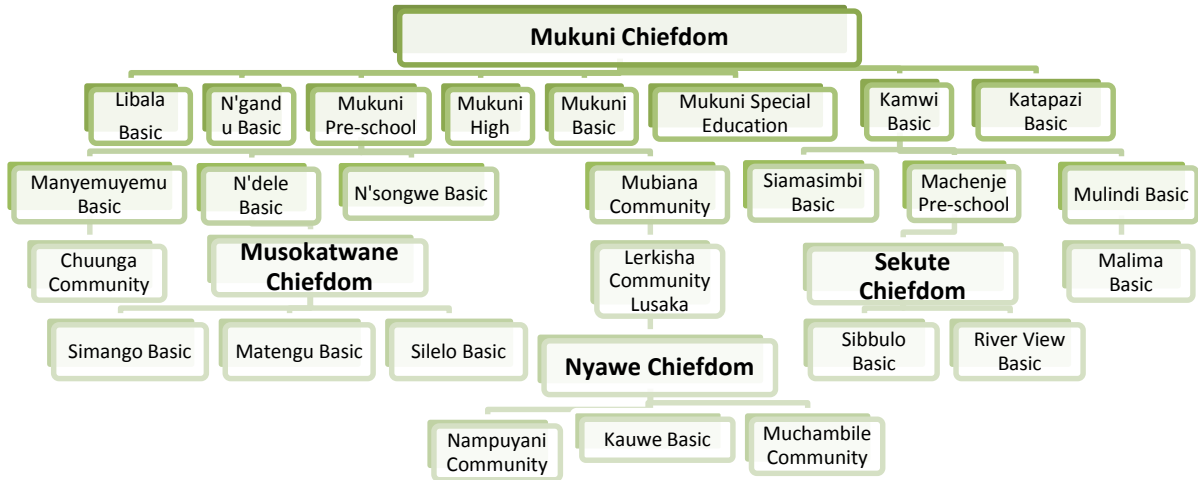
EDUCATION

- ORPHAN SPONSORSHIP PROGRAM – over 500 orphans from seven schools
- MUKUNI HIGH SCHOOL – materials, orphan support, boarder’s shelter
- MUKUNI BASIC SCHOOL – feeding program for over 400 orphaned and vulnerable children, two boarders’ shelters, stationery, uniform making project, peer education for HIV/AIDS
- MUKUNI SPECIAL EDUCATION – UK teacher exchange, sustainable income-generation
- MUKUNI PRE-SCHOOL – attended by 205 children, supporting three teachers
- FURTHER EDUCATION – 3 students on teacher’s training courses
- KINDLES FOR SCHOOLS – provided for Mukuni schools and Lubasi Orphanage
- N’GANDU BASIC SCHOOL – materials, orphan support, provision of seeds
- KATAPAZI BASIC SCHOOL – equipment and material, provision of seeds
- KAMWI BASIC SCHOOL – orphan support, stationery, provision of seeds
- SIAMASIMBI BASIC SCHOOL – educational material, seeds, orphan support
- N’DELE BASIC – uniform making, materials, provision of seeds, orphan support
- MACHENJE PRE-SCHOOL – supporting two teachers, stationery and equipment
- SIBBULO COMMUNITY SCHOOL – opening of a new school, materials, provision of seeds
- CHUUNGA COMMUNITY SCHOOL – classroom funding, materials, provision of seeds
- MALIMA COMMUNITY SCHOOL – opening of a new school, materials, provision of seeds
- RIVER VIEW BASIC SCHOOL – special education unit under construction
- SUSTAINABLE PROJECTS – school gardens, uniform making



It is reputed that 90 million disabled children worldwide do not have access to education

SCHOOLS SUPPORTED BY THE BUTTERFLY TREE





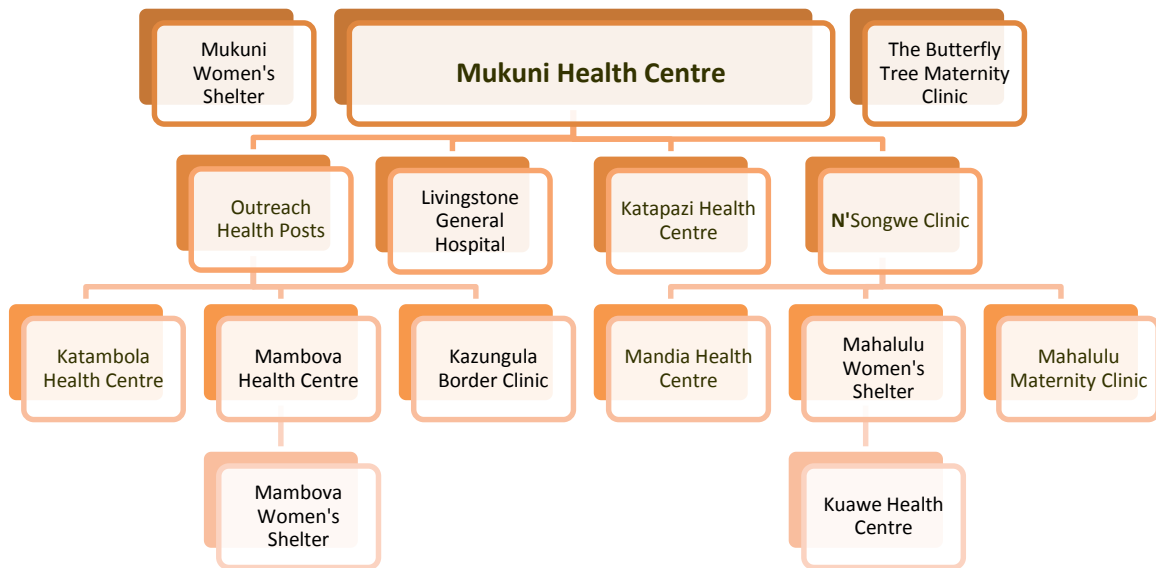


HEALTH

- **CLINICS** – supporting Mukuni, Katapazi & N’songwe health centres, including The Butterfly Tree maternity clinic. These centres cover a population in excess of 12,000. An entire new clinic at Mahalulu with maternity, women’s shelter, 3 staff houses, bore hole and latrines opening shortly
- **MATERNITY** – The Butterfly Tree maternity clinic and women’s shelter at Mukuni. A new women’s shelter to be constructed for Mambova clinic
- **UNDER-FIVE’S FEEDING PROGRAM** – assists orphaned and under-nourished infants and mothers who are unable to breastfeed, provision of formula and vitamin supplements
- **TREATMENT** – provided funds for a number of sick children to undergo operations, attend eye clinics and receive treatment and physiotherapy.
- **MALARIA** – provided thousands of mosquito nets, malaria testing kits and educational workshops in the Mukuni Chiefdom and distributed mosquito nets to five clinics in the Sikute Chiefdom.
- **HIV/AIDS** – supporting four HIV/AIDS programs: workshops offering voluntary testing, counselling, sensitization programs, educational material, peer-education for HIV/AIDS prevention, funding HIV/AIDS patients, and AIDS orphan support. An event was funded for World AIDS Day
- **MEDICAL SUPPLIES** – provided vast amounts of bandages, dressing, sanitizing and medical equipment.
- **KAMWI TWINS** – continuation of support for twin boys whose mother died in childbirth
- **ORPHANED INFANTS** – sponsorship & support provided
- **WATER & SANITATION** – added two new boreholes and 3 double and three single latrines

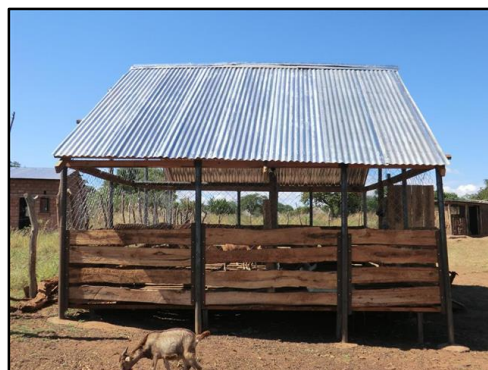


CLINICS SUPPORTED BY THE BUTTERFLY TREE



COMMUNITY

- **WATER** – provided two new bore holes, in addition to having safe drinking water schools are able to grow vegetables to supplement feeding programs.
- **SANITATION** – installed a number of latrines in schools and clinics
- **COMMUNITY HOUSES** – a further three community houses have been constructed for the elderly and widows looking after orphans, making a total of sixty-nine
- **SUSTAINABLE PROJECTS** – projects have been initiated for groups, particularly for women to have self-sustainable income generating activities, which include chicken and goat rearing, vegetable growing and sewing
- **GOAT FARMING** – goat rearing project for women to raise funds for disabled children. The Carly Elizabeth Farm goat's milk project in operation at Mukuni and Machenje
- **CHICKEN FARMING** – support has been given to groups of women to raise chickens as a sustainable income - generating activity
- **MAIZE FARMING** – the charity provided funds to help people who cannot afford seeds to grow maize
- **SPORT** – sponsoring Mukuni United football team
- **WORLD AIDS DAY** – funded lunch and workshop to spread awareness about the dangers of HIV



COMMUNITIES SUPPORTED BY THE BUTTERFLY TREE

MUKUNI CHIEFDOM

Mukuni Chiefdom is just seven kilometers from the Victoria Falls and sixteen from Livingstone. There are over 100 villages with a population in excess of 17,000. In addition to building schools and clinics we support many ongoing projects in the Mukuni Chiefdom

- Mukuni
- N'gandu
- Kamwi
- Machenje
- Siamasimbi
- Katapazi
- Damwa
- Malima
- Ndele
- Chibale
- Kafekwa
- Mandandi
- Libala
- Mulindi
- N'songwe
- Mubiana
- Manyemumyemu
- Mandandi
- Chibule
- Chuunga

MUSOKATWANE CHIEFDOM

Musokotwane Chiefdom spreads from north of Livingstone towards Kaloma. It has over 400 villages and the main source of income is farming. Two entire new schools have been provided by the charity and a special education unit in 2014.

- Matengu
- Silleo
- Simango

SIKUTE CHIEFDOM

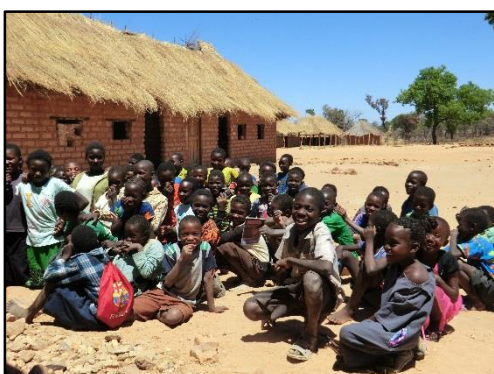
Sikute Chiefdom lies between Livingstone and the Kazungula Border. Safe clean water, housing and sustainable community projects have been initiated in these remote villages, in addition to providing improved health and educational facilities, most recently a special education unit

- Sibbulo
- Mandia
- Mambova
- Katambola

NYAWE CHIEFDOM

The Nyawe Chiefdom is close to Zimba and is mostly an agricultural area. This Chiefdom is more under-developed than most, villages have poor access, especially during the rainy season. We are supporting three schools and a health clinic

- Kauwe
- Muchambile
- Nampuyani



VOLUNTEERS

This past twelve months has seen a substantial increase in requests for volunteering with The Butterfly Tree in Zambia. We had seven volunteers from the US, one from Canada, Costa Rica and Germany and twelve from the UK, two of which came through Saga Volunteer Travel. In addition we had two groups of pupils from Thomas Mills School in Suffolk who raised funds to build the school shop at Mukuni.

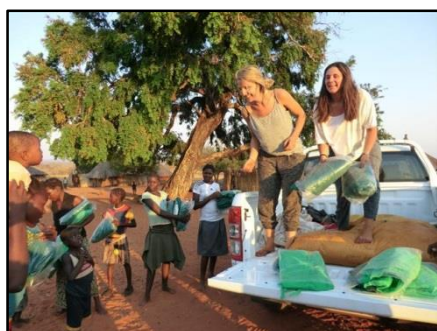
The benefits of having these volunteers are substantial, especially in the classrooms which are always under-staffed. Others have assisted at the clinic and with community projects. Three of the volunteers asked to join The Butterfly Tree on their return. For some people it is a life-changing experience and a way of spreading awareness of our cause.

We have also had a number of school leavers, some of which were sponsored by The Butterfly Tree assisting us with some of our projects, most notably HIV prevention through peer education. A further nineteen volunteers from the UK, New Zealand and the US will be joining us during the following months.

2013-14 Volunteers

Some of the UK and overseas volunteers who helped us at Mukuni and beyond:

- Johnathan Sedo (Costa Rica) – Ecotourism
- Carolyn Howe – special education
- Bob & Cindy Orr (US) - education
- Julie Friedrich (Germany) – orphan sponsorship
- Joshua Lockley & Sophie-Jade Gahir - Adventure Tourism, Birmingham University - education
- Mutasa Marau, Makuka Mayuka & Raschel Inse - peer education for HIV/AIDS prevention
- Gill Waterton & Richard Reid, Saga Volunteer Travel – education
- Thomas Mills High School – construction & education
- Kayleigh Blake – education
- Vicky Higgs – community work
- Emma Kennedy – education
- Jess Varley – medical
- Margaret Bax and Casey Short (US) - goat's milk project
- Fountaindale School Teachers - special education



VISITORS

- Attraction Tickets Direct Group
- Saga Travel
- Horwich Rotary Club
- New Zealand & Australian Travel Groups

FUNDRAISERS

There were many people using their initiative to raise vital funds for The Butterfly Tree, some of the most noticeable were:

- Saga Travel Employees - for mosquito nets a boarder's shelter & special education unit
- Saga Volunteers - education
- ENRC Marketing AG (Switzerland) employees - raised £2,000 for special education units
- Brady Italia - health and education
- Grant & Marilee Gibson (Canada) - malaria prevention
- Dee Smith (US) - School Shop & orphan sponsorship
- Robert & Cindy Orr (US) - education
- Mutsa Marau, Makuka Mayuka & Raschel Inse - HIV Prevention
- Saliya & Nicole - City to Surf, Sydney Australia
- Fountaindale School - special education & sustainable enterprise
- Wolverton School - orphan sponsorship
- Thomas Mills School - education
- Gill St. Bernard School - education
- St Andrew's University
- William Anderson - community houses
- Margaret Bax & Casey Short (US) - goat's milk project
- Tasmanian Women's Choir (Australia) - orphan sponsorship
- Mukuni Village Fund (Australia) - sponsoring 50 orphans
- Norton Lindsey & Bearley Parish Churches
- Solihull Inner Wheel Club & District 6 Clubs
- Warwick Lions Club - malaria prevention
- Fiona Doubleday - malaria prevention
- Sheila Attah & Poverty Kickz – donating trainers



WAY FORWARD

Poverty in Zambia is widespread. Life expectancy is among the lowest in the world and the death rate is one of the highest - largely due to the prevalence of HIV and AIDS. Two-thirds of the population are still living below the poverty line and thousands of villages are lacking in basic needs. Education is the key to alleviating poverty and its related issues.

We need to source new rural areas where there are no schools and develop existing schools that are lacking in facilities. As more orphans complete their education we have to find sponsorship for further education and initiate income-generating enterprises for those who do not gain a place at college. Schools must have sustainable feeding programmes to alleviate hunger amongst pupils, especially those who walk long distances. Additional bore holes need to be constructed so that children no longer have to drink from bacteria-infected streams and crocodile infested rivers. Improved sanitation in schools is essential to prevent contracting diarrhoeal diseases.

As always it is vital to address the issue of HIV and AIDS, some of the best results can be gained by targeting school children. Malaria remains one of the toughest challenges. Therefore it is imperative that additional preventative methods are in place and educational workshops are provided to combat this disease.

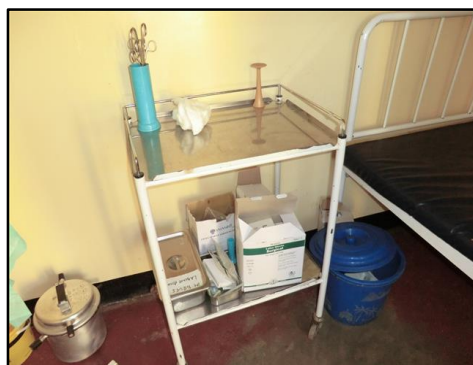
A great deal of mutual benefit can be gained from accepting volunteers. Teachers, nurses, skilled professionals and community workers are especially helpful. Promoting travel philanthropy is a positive way to create awareness and to generate funds. As with volunteering this can be a life-changing experience when visiting a rural village for the first time. Business incentive groups, school trips and individuals can have a 'hands on' experience working with the charity and local communities in a stunning location, close to the mighty Victoria Falls.

Creating an Ecotourism project for schools in this region is the way forward. The area has a wealth of potential and a need for school leavers to have a sustainable income-generating enterprise. This long-term project will be achieved by involving the tourism industry, sourcing and selling local products, recycling, tree planting, conservation and wildlife. Our goal is to have an Ecotourism Centre that will attract visitors from all over the world.



CHALLENGES

- HIV and AIDS
- Malaria
- Lack of safe, drinking water
- Accessibility and transport to remote villages
- Transportation hire and need of a having our own vehicle
- The ever-increasing cost of fuel, materials and food
- Under-nourished children and hunger
- Lack of schools and healthcare facilities
- Insufficient medical and educational supplies
- Fluctuating exchange rates
- Poor crop yield due to lack of rain
- Need for further special education units
- Sourcing new funds



FUTURE OBJECTIVES

Providing education for these rural children is paramount, therefore we will continue to source rural areas where there is a need for development. Many of our sponsored orphans have now completed their education, we are committed to initiating income-generating activities. We will add at least twenty new children to the orphan sponsorship programme and provide additional supplies to a number of schools. Plans are underway to expand Ng'andu and Kasiya schools in the Mukuni Chiefdom as well as Nampuyani and Muchimbale in the Nyawe Chiefdom.

More boreholes and latrines are to be installed in schools to help eliminate disease and improve on hygiene levels. Our main objective will be to introduce a new malaria prevention project to Zambia using two safe new products, which could potentially save the lives of thousands of children. Working with the Ministry of Health we aim to reach out to the worst hit areas to help the fight against malaria.

Teaching HIV prevention through peer education will continue within the rural schools to reduce the number of new cases of HIV. This will also incorporate education on sexual health and the dangers of early pregnancies in teenagers. The Livingstone area has a prevalence of 27%, therefore it is imperative that we continue to address the issue to help prevent the spread of this devastating virus. Education is the key to making the change.

We are expecting a considerable number of volunteers over the next few months and we aim to take advantage of their skills and generous support. The Butterfly Tree will continue to promote travel philanthropy to create awareness of the plight of these vulnerable children.

The team and all our volunteers are dedicated to reaching out to remote areas where there is very little support from other organisations. As always we will not deduct any administrative costs or personal fees from your donations.

'They only need the essential in life - WATER FOOD HEALTH EDUCATION'





We could not have achieved any of this without the generous support of our donors, followers and volunteers from around the world. The need, at times, can be overwhelming, but every year we have been able to expand our work into more rural schools and communities. Seeing orphaned and vulnerable children gaining access to safe water, improved education and healthcare is incredibly humbling. As always we rely on volunteers to run the charity both in the UK and Zambia, which has enabled all the money raised to go directly to the grass roots projects.

Trustees: Jane Kaye-Bailey (Chairman), David Kaye and Miranda De Freston



The Butterfly Tree
Charity Accounts from 1st April 2013 to 31st March 2014

	<u>£'s</u>
INCOME	
Donations, Sponsorship & Fundraising	133,506
	<hr/> 133,506
EXPENDITURE	
Orphan Sponsorship	35,893
Teacher & Boarding Fees	6,780
Building Projects	21,828
Other Projects	1,250
School Equipment	27,644
Supplies	157
Food & Healthcare	32,891
Promotional Activities	855
Transportation	9,537
Miscellaneous	950
Bank Charges	45
Admin fees	-
	<hr/> 137,830
Net of receipts/ (payments)	(4,324)
Reserves brought forward at 1st April 2013	25,738
RESERVES REMAINING at 31st March 2014	<hr/> <hr/> 21,414

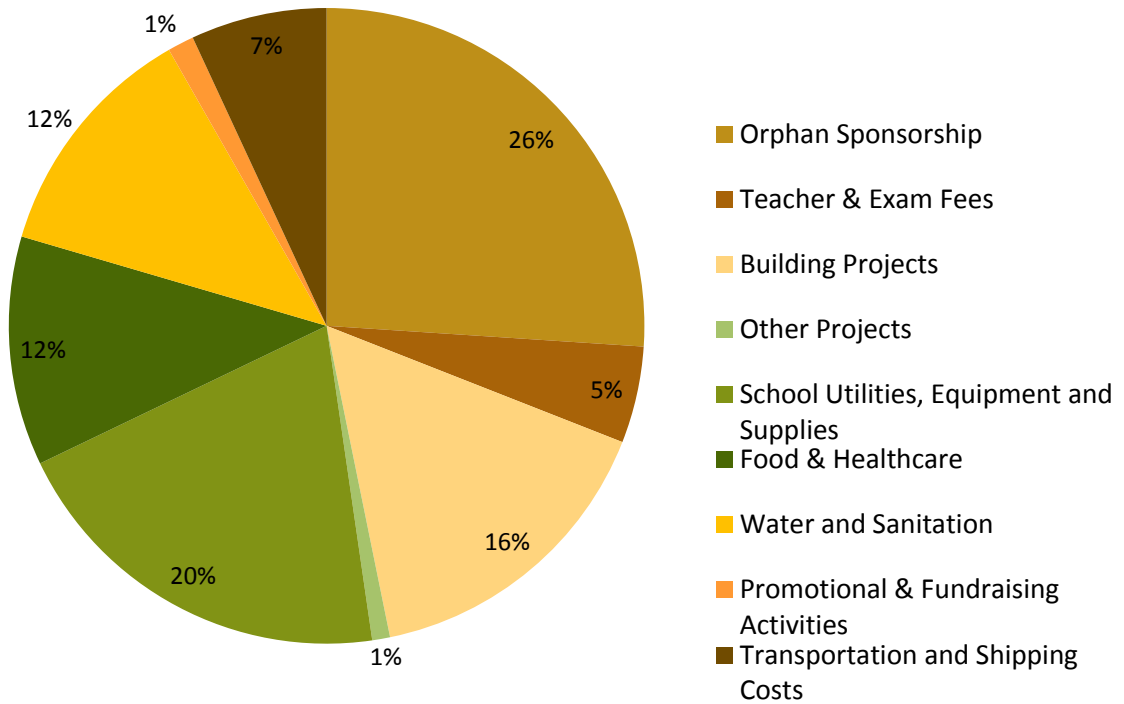
These accounts have been prepared on a 'receipt and expenditure' basis, with the information provided.

Signed: J. Kaye-Sailey Date: 22/05/2014

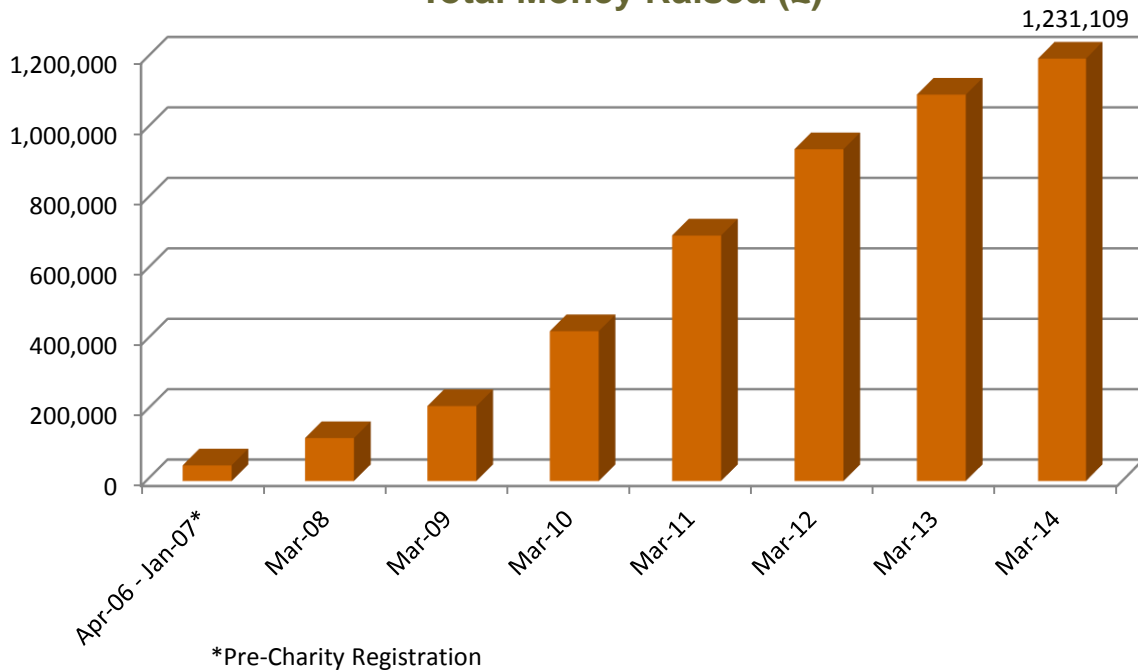
As trustee of The Butterfly Tree charity I hereby approve the above accounts and confirm that all necessary information was provided in order that they be completed accurately.

Signed:  Date: 22/05/2014

Total expenditure: April 13 - March 14



Total Money Raised (£)



We would like to thank Grenfell James (formerly Accountax) of Stratford-upon-Avon for once again verifying the accounts.



'A HUGE THANK YOU TO ALL THE BUTTERFLY TREE SUPPORTERS'





THE BUTTERFLY TREE ORPHAN SPONSORSHIP PROGRAM

'As young butterflies emerge from their pupae, they are placed in a tree, where their wings can continue to develop. Then they are released into the wild'.

The Butterfly Tree
nurturing those in need



Registered charity no. 1118084
3 Gannaway Court, Norton Lindsey, Warwick CV35 8JR
Tel: 44 (0) 1926 843699 Fax: 44 (0) 1926 843879
Email: jane@thebutterflytree.org.uk
www.thebutterflytree.org.uk