

THE BUTTERFLY TREE

**UK CHARITY & NON-GOVERNMENT ORGANISATION
HELPING RURAL COMMUNITIES IN ZAMBIA**



ANNUAL REPORT 2010-2011

UK Charity No 1118084

FROM THE CHAIR...

Five years on and The Butterfly Tree is still going strong. A significant amount of progress has made a lasting change to the Mukuni Chiefdom with the advancement of our health and education projects. Successful fundraising has enabled the charity to build additional classrooms, teachers' and clinic houses, bore holes and latrines. Each school now has a bore hole, providing safe clean drinking water an opportunity to grow vegetables, which provides a sustainable feeding program. All these schools have much improved educational facilities. These constructions have been erected throughout the Chiefdom to improve the facilities and well being of some 20,000 vulnerable people. Ten of the twelve schools have received our support, several have been upgraded and in addition to this we have expanded the three clinics.

2010 brought about a forty per cent rise in inflation for Zambia adding further pressure to rural communities coping with the challenges of food and water shortages and incurable diseases such as HIV/AIDS and malaria. The continuation of international aid is vital to alleviate the problems and help the plight of the 710,000 orphans.



The HIV/AIDS pandemic continues to ravish these humble people, with so much loss our aim is to protect the next generation. All our work focuses around the welfare of the orphans, the youth of today is the future of tomorrow. By targeting the school pupils, teaching them the dangers of HIV/AIDS, how to prevent it and how not to spread it, we strongly believe that a change can be made.

Included in our prevention programs is the invaluable under-fives' feeding program, to provide formula, which replaces breast milk in HIV positive mothers. For the past four years all infants who have participated on this program have been tested free of HIV. Due to the high cost of formula we have introduced a goat's milk project as another substitute. Equally vital is our malaria prevention program, our aim is to provide all children under five and pregnant woman with an insecticide-treated mosquito net in the areas of our work. The World Health Organization states that they can cut malaria rates by half.

Two of the most humbling experiences during this past year were firstly to support twin boys whose mother tragically died in childbirth along with her baby daughter. It was one of the most heartbreaking cases I have had to deal with; the infants barely weighed three kilos when they were discharged from hospital and sent to a village with no electricity or running water. Several months later, with our financial support, Vincent and Elvis are happy and healthy and being cared for by their grandmother. Secondly the newly opened special education class at Mukuni has given children with learning difficulties a rare opportunity to be taught in a school environment. Presley Mulenga, Head Teacher of Mukuni and Thomas Chanda, hosted by Fountaindale Special Education School in Nottinghamshire, travelled to the UK to learn more about how to advance this initiative.

As a charity we are gaining more recognition from grant-bearing organizations, corporate, schools and clubs. We continually promote travel philanthropy and invite tourists to visit our projects in Mukuni Village as part of their Zambian itinerary. This has brought in a substantial amount of funding and has attracted a number of volunteers. Virtually every month we have volunteers from the UK, Europe, US and Australia working at the schools or the Mukuni Health Centre.

Running a successful charity has to be maintained and none of this success could have been achieved without my fellow trustees, David and Miranda, Ann and Mary (administration), Frank Maiolo (our US representative), our volunteers and the many fundraisers who have generously given their time to assist The Butterfly Tree. We have gained a sound reputation for transparency, have a solid relationship with our donors and give regular feedback whenever possible. We continue as volunteers both in the UK and Zambia.

As always I am extremely grateful to our team in Zambia, Presley Mulenga, Mupotola Siloka, Martin Mushabati, Rosemary Siloka, Veronica Mukuni and Stain Musengaila and the ten female representatives who oversee the orphan sponsorship program. Their dedication and hard work has been truly inspirational, without them none of this could have been accomplished. A special thanks to Chief Mukuni and several local hotels, lodges and tour operators who support our work.

As much as I would like to name every one of our supporters who have trusted in our judgment and given so generously to our cause, it is just not possible. However I must thank our major sponsor the Jersey Overseas Aid Commission, who has given us the opportunity to open new schools and clinics. Other major sponsors include Saga Charitable Trust, Just a Drop, the British and Foreign School Society and The Besom. Corporate sponsors Cunninghams and Gardiff have liberally funded ongoing projects since the founding of the charity. Thank you to the Australian Mukuni Village Fund for sponsoring fifty orphans, Karen Lytle and all the schools, clubs, churches and individuals from around the globe. We are so very grateful to everyone who has helped us to make a lasting change in the Mukuni Chiefdom and look forward to a new relationship with the people of the Muskotwane Chiefdom.

Jane Kaye-Bailey
Chairman



WHERE WE WORK



ZAMBIA

Population	13.5 million
Life Expectancy	35-42 years
Population living on less than a dollar a day	64%
Population having access to safe water	58%

HIV/AIDS IN ZAMBIA

HIV/AIDS Prevalence	17%
Adults with HIV	1,000,000
Children with HIV	130,000
AIDS Orphans	710,000
HIV infected people receiving treatment	85%

MALARIA IN SUB-SAHARA AFRICA

- 90% of all malaria deaths occur in sub-Saharan Africa
- 1 in 5 childhood deaths are caused by malaria
- Someone dies from malaria every 40 seconds
- Children and pregnant women are most at risk

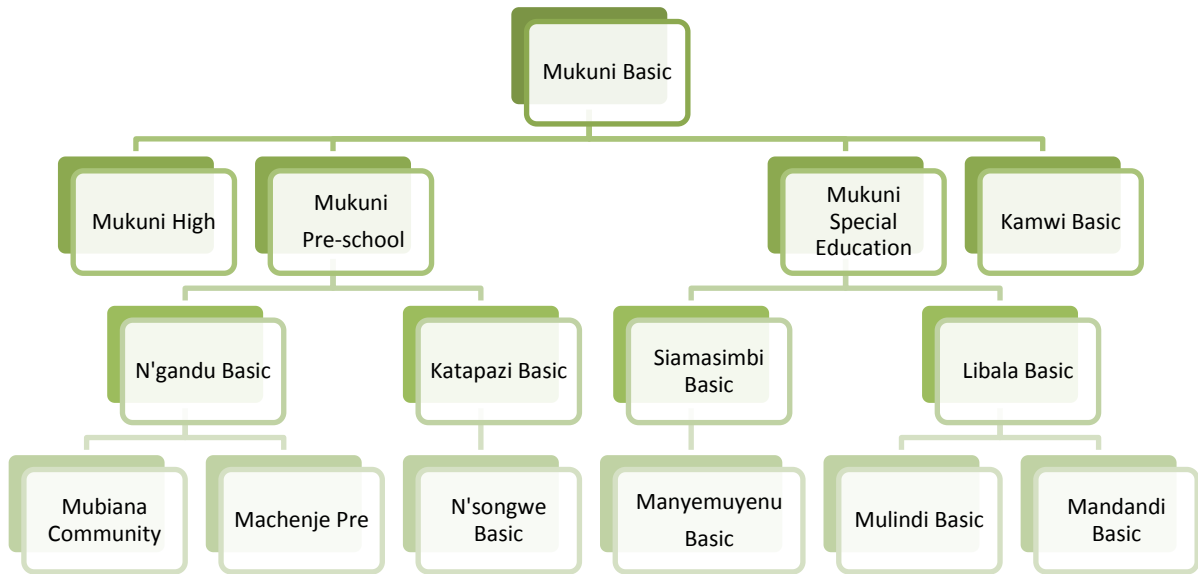
PROJECTS UNDERTAKEN

EDUCATION

- ORPHAN SPONSORSHIP PROGRAM – over 500 orphans receiving support
- MUKUNI HIGH SCHOOL – Science lab, materials, orphan support
- MUKUNI BASIC SCHOOL – 1x3 classroom, feeding program for 350 orphaned and vulnerable children, stationery, equipment, bicycles, uniform making project
- MUKUNI SPECIAL EDUCATION – new classroom, equipment and ongoing support
- PRE-SCHOOL – additional classroom continuation project providing materials and supporting three teachers. Over 250 children attend three classes throughout the day
- TEACHERS' ACCOMMODATION – completed three teachers' house
- N'GANDU BASIC SCHOOL – materials, clothing, orphan support, feeding program
- KATAPAZI BASIC SCHOOL – equipment and material, feeding program
- KAMWI BASIC SCHOOL – new classrooms, teacher's house, uniform making, stationery
- SIAMASIMBI BASIC SCHOOL – addition of a classroom, educational material, clothing
- MANDANDI BASIC – completion of new school, classrooms, teacher's house, latrines
- MACHENJE PRE-SCHOOL – new classroom, stationery and equipment
- MATENGU COMMUNITY SCHOOL – construction under way for a new basic school
- SILELO COMMUNITY SCHOOL – construction under way for a new basic school
- MALIMA COMMUNITY SCHOOL – construction under way for a new basic school
- SPORTS – all schools received footballs and netballs



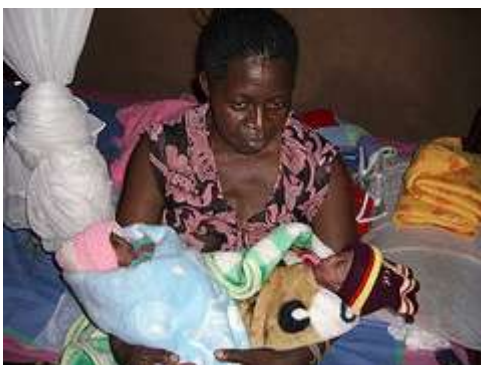
SCHOOLS SUPPORTED BY THE BUTTERFLY TREE



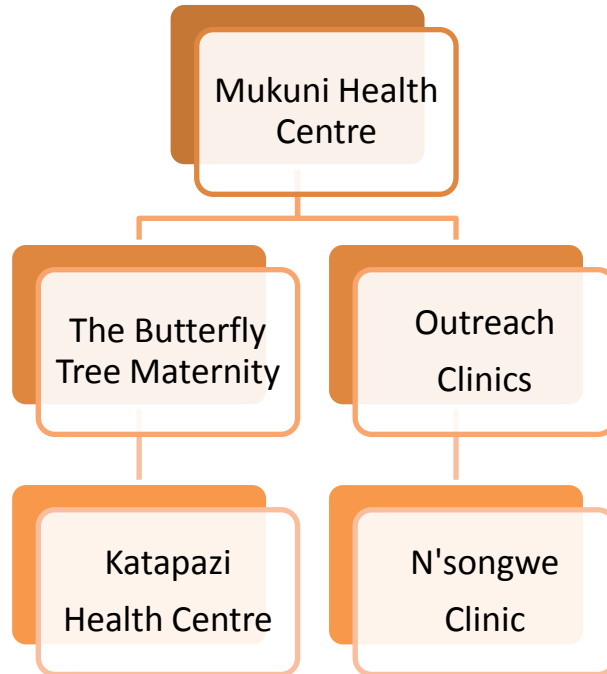
In addition three new schools will be completed in 2011. Malima in the Mukuni Chiefdom, Matengu and Silelo in the Musokotwane Chiefdom

HEALTH

- **TREATMENT** – again provided funds for a number of sick children to undergo operations, treatment and physiotherapy as well as helping the elderly
- **UNDER-FIVE'S FEEDING PROGRAM** – targets babies whose mothers are HIV positive, advising them to wean infants prematurely to reduce mother to child transmission of HIV. All babies on the program have been tested free of HIV since 2007
- **MALARIA** – provided mosquito nets, malaria testing kits & educational workshops. In areas of distribution no new cases reported
- **HIV/AIDS** – supporting four HIV/AIDS programs: workshops offering voluntary testing, counselling and sensitization programs, funding HIV/AIDS patients, educational material, AIDS orphan support
- **TESTING KITS** – for malaria and syphilis have greatly helped in diagnosing these problems, both can be treated after early detection
- **CLINICS** – supporting Mukuni, Katapazi & N'songwe health centres including The Butterfly Tree maternity clinic. Addition of a staff to N'songwe Clinic. The health centres cover a population of 12,000.
- **MEDICAL SUPPLIES** – provided vast amounts of bandages, dressing, syringes and medical equipment. Clinic beds and birthing kits.
- **KAMWI TWINS** - supporting boys who's mother died in childbirth with her daughter



CLINICS SUPPORTED BY THE BUTTERFLY TREE



COMMUNITY

- **WATER** – provided two new bore holes, schools are now able to grow vegetables to supplement the feeding programs. New water pipes at Mukuni Health Centre
- **COMMUNITY HOUSES** – to date over 55 substantial houses have been provided for the elderly and widows with orphans
- **SUSTAINABLE PROJECTS** – projects have been initiated for groups, particularly for women to have self-sustainable income generating activities, these include chicken and goat rearing, fish farming, maize enterprise and sewing with the introduction of micro-financing
- **GOAT FARMING** – goat rearing project for women to raise funds for disabled children. Goat farming to rear goats for milk production to support the under-fives' feeding program and provide a sustainable income
- **CHICKEN FARMING** – support has been given to groups of women to raise chickens as a sustainable income - generating activity
- **MAIZE FARMING** – through micro-financing a group of women have set up an enterprise buying and selling maize to provide a sustainable income



In addition to the above projects we continued promoting The Butterfly Tree CD, 'Change for the Better', to raise funds and awareness for the fight against malaria. Sadly Crystal Saun one of the artists, who freely donated his time, passed away this year

COMMUNITIES SUPPORTED BY THE BUTTERFLY TREE

MUKUNI CHIEFDOM

- Mukuni
- N'gandu
- Kamwi
- Machenje
- Siamasimbi
- Katapazi
- Damwa
- Malima
- Kafekwa
- Mandandi
- Libala
- Mulindi
- N'songwe
- Mubiana
- Manyemumyemu
- Mandandi

MUSOKATWANE CHIEFDOM

- Matengu
- Silelo

Safe clean water, housing and sustainable community projects have been initiated in these remote villages, in addition to providing improved health and educational facilities.



VOLUNTEERS

We have attracted a number of volunteers who have worked at the school and clinic in Mukuni Village during the past twelve months. We have an ongoing program with Sydney University, organised by Professor Doug Saunders, who send medical students in their final year to assist at the clinic.

A number of teachers, students and professionals have taught at Mukuni, N'gandu and Kamwi schools and have given invaluable tuition and sport lessons to a numerous classes. Women's groups have been initiated by project managers and two school uniform projects have greatly benefitted Mukuni and Kamwi schools. This has reduced the cost considerably. Community houses have been constructed for a number of widows and the elderly accommodating orphans.

2010-11 Volunteers

Some of the volunteers who helped us at Mukuni:

- Mike Kaye & Lucy Machin – community house building & teaching
- Australian Medical Students, Sydney University – Mukuni Health Centre
- Margaret Bax & Casey Short (US) – Goat's milk project
- Sue & Carleigh Ross (Canada) – school & clinic
- Brendan Poynton – teaching music
- Charlotte Fitcher & Alissa – teaching at Kamwi School
- Mark Dengel & Denise Brooks – Fountaindale School Special Education
- Claire Shehan & daughter – pre-school
- Vicky Hargest & Jeremy Thornley– medical students

FUNDRAISERS

There were many people using their initiative to raise vital funds for The Butterfly Tree, some of the most noticeable were:

- Jake-Wilson-Gunn and Andrew Mottram cycled from Lands End to John 'O Groats
- Mike Kaye and Nigel Birch cycled in one day from London to Nottingham
- Vicky and Rachel Sampson, Paris Marathon
- Basement Entertainment – Fight against Malaria Event
- Brendan Poynton - Mukuni Music Centre
- LSR Rotary Club - Community Houses
- Wolverton School – Orphan Sponsorship
- Fountaindale School – Special Education
- Farlingaye High School
- Placer Nature Centre (US) – Mubiana School
- Margaret Bax & Casey Short (US) – Goat's milk project
- Tasmanian Women's Choir (Australia) – orphan sponsorship
- Mukuni Village Fund (Australia) – sponsoring 50 orphans
- Sammi Cohen & (US)
- UCL Development Initiative – Malaria prevention

WAY FORWARD

The Butterfly Tree in both the UK and Zambia is run by a team of volunteers, dedicating their time freely to help with the administration and running of the charity and all of them are totally committed to making a difference.

After five years we have been able to expand our work to improve the water, health and education facilities throughout the Chiefdom, bringing about sustainability in many areas. More of this has to be done so that these vulnerable people are not totally dependent on international aid. Poverty is extreme due to the high HIV/AIDS statistics and the only way to overcome this is through education. We will continue our ongoing projects at the Mukuni schools and clinics, but aim to reach out to more rural communities in other Chiefdoms using our work at Mukuni as a model.

This year we advanced a number of schools and the forthcoming year will see the addition of three new schools, one in Mukuni and two in the Musokotwane Chiefdom, a vast area with some four hundred villages. More children will have access to education and safe, clean water. Due to the distance from Mukuni we must encourage sustainability in these outreach communities as it would be impossible for a small charity to provide as much as we have at Mukuni.

It is imperative to improve the health facilities by adding extra clinics. In many areas people have to walk between twenty and forty miles to seek medical care putting lives at risk. Mosquito nets and HIV/AIDS workshops are imperative.

I am delighted to say that all the schools and communities throughout the Mukuni Chiefdom have access to safe, clean water. Therefore we will aim to source new areas outside the Chiefdom that have no bore holes. Lack of sanitation is another major issue and we will be adding a number of latrines in schools. To further improve the conditions at The Butterfly Tree maternity clinic a shelter is being built for women who live a long distance from the clinic. This will provide accommodation prior to the onset of labour and a safer environment for both mother and infants.

CHALLENGES

- Accessibility and transport to remote villages
- Transportation vehicle hire costs
- The ever increasing cost of materials and food
- Fluctuating exchange rates
- Sourcing new funds
- Sustainability

FUTURE OBJECTIVES

In total we have helped ten schools in the Mukuni Chiefdom and by the end of the year we will have built three additional schools. Education, whether it is in schools or clinics, will be our major priority as it is the only way to improve the hardships of a nation suffering from poverty, hunger, disease and lack of safe, clean water.

We will continue to assist the government's initiatives for HIV/AIDS and malaria prevention by providing peer education, community workshops and the provision of mosquito nets and malaria testing kits. Health Centres receive insufficient government support and we will continue to provide medical supplies. Funding for sick children will be another of our priorities; many children have to wait years for treatment and operations and we have successfully funded a number of children in the past few years.

The Butterfly Tree will continue to accept more volunteers to work on the projects at schools, clinics and within the community. Teaching and sharing expert knowledge, skills and project management can bring about further sustainability.

As always we are totally committed to helping these vulnerable people. Our teams both in the UK and Zambia are dedicated to making the change and will strive to raise further funds to provide water, food, health and education programs.





Thank you to every one of our donors and supporters, many who have been with us right from the start. Your generosity is truly inspirational and has given us the opportunity to reach out to more vulnerable children in rural communities. We very much appreciate your trust in our ability to carry out the projects in Zambia, which have helped to provide the essentials in life - water, food, health and education. Our aim help is to help them prevent losing the next generation.

Trustees: Jane Kaye-Bailey (Chairman) David Kaye (Treasurer) and Miranda De Freston



**The Butterfly Tree Charity
Statement of Financial Activities
for the year ended 31/03/2011**

	Unrestricted Funds	Total Funds	Prior Period Total Funds
	2011	2011	2010
Incoming Resources			
Revenue, grants, legacies & donations	271,457	271,457	212,994
Investment Income			
Total Incoming Resources	<u>271,457</u>	<u>271,457</u>	<u>212,994</u>
Net Incoming Resources available for charitable applications A	<u>271,457</u>	<u>271,457</u>	<u>212,994</u>
Cost of activities in furtherance of the charity's objectives	275,320	275,320	166,616
Support costs of activities	17,707	17,707	7,567
Management and administration of the charity	1,667	1,667	3,454
Total Resources expended B	<u>294,695</u>	<u>294,695</u>	<u>177,637</u>
Net Incoming Resources before Transfers (ie Total A minus Total B)	(23,238)	(23,238)	35,357
Gross Transfers between funds-	-	-	-
Net Incoming Resources before revaluations and investment asset disposals	<u>(23,238)</u>	<u>(23,238)</u>	<u>35,357</u>
Total funds brought forward	37,327	37,327	1,970
Total funds carried forward	<u>14,089</u>	<u>14,089</u>	<u>37,327</u>

The net movement in funds referred to above is the net incoming resources as defined in the Statement of Recommended Practice for Accounting and Reporting issued by the Charity Commissioners for England & Wales and is reconciled to total funds as shown on the Balance sheet, as required.

All activities derive from continuing operations

**The notes and schedule to the Statement of financial activities
form an integral part of these accounts**

Statement of Total Recognised Gains and Losses
for the period from 1 April 2010 to 31 March 2011

	2011	2010
Excess of income over expenditure	(23,238)	35,357
Net Movement in funds before taxation	<u>(23,238)</u>	<u>35,357</u>

**The Butterfly Tree Charity
Balance Sheet
for the period from 1 April 2010 to 31 March 2011**

	2011	2010
Fixed assets	-	-
Current Assets		
Cash at bank and in hand	<u>14,089</u>	<u>37,458</u>
Net current liabilities	14,089	37,458
Total assets less current liabilities	<u>14089</u>	<u>37,458</u>
Creditors		
Provisions for liabilities and charges	-	-
Net Assets	<u>14089</u>	<u>37458</u>
Capital and reserves		
Unrestricted revenue reserves	14,089	37,327
Resources freely available	<u>14,089</u>	<u>37,327</u>
Restricted revenue reserves	-	-
Accumulated Funds	<u>14,089</u>	<u>37,327</u>

The Board of Trustees are satisfied that the organisation is not required to have an audit of the organisation by virtue of its level of turnover or by virtue of any requirement under its constitution otherwise.

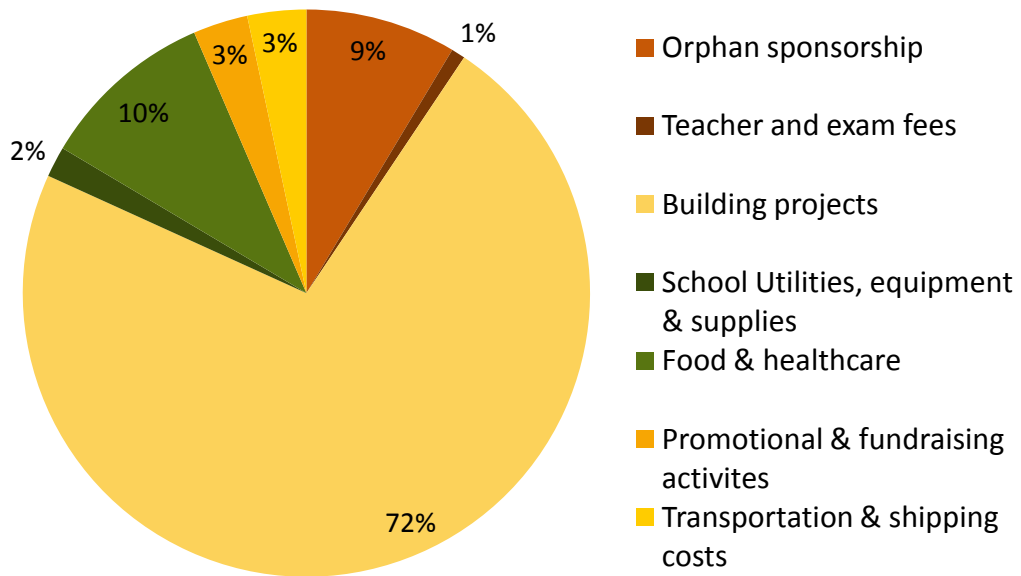
The Board of Trustees also acknowledge their responsibility for ensuring the organisation keeps proper accounting records in accordance with the requirements of the Charities Act 1993.

Trustee *J. Kaye-Bailey*
 Approved for signature by JANE KAYE-BAILEY on 18.08.11

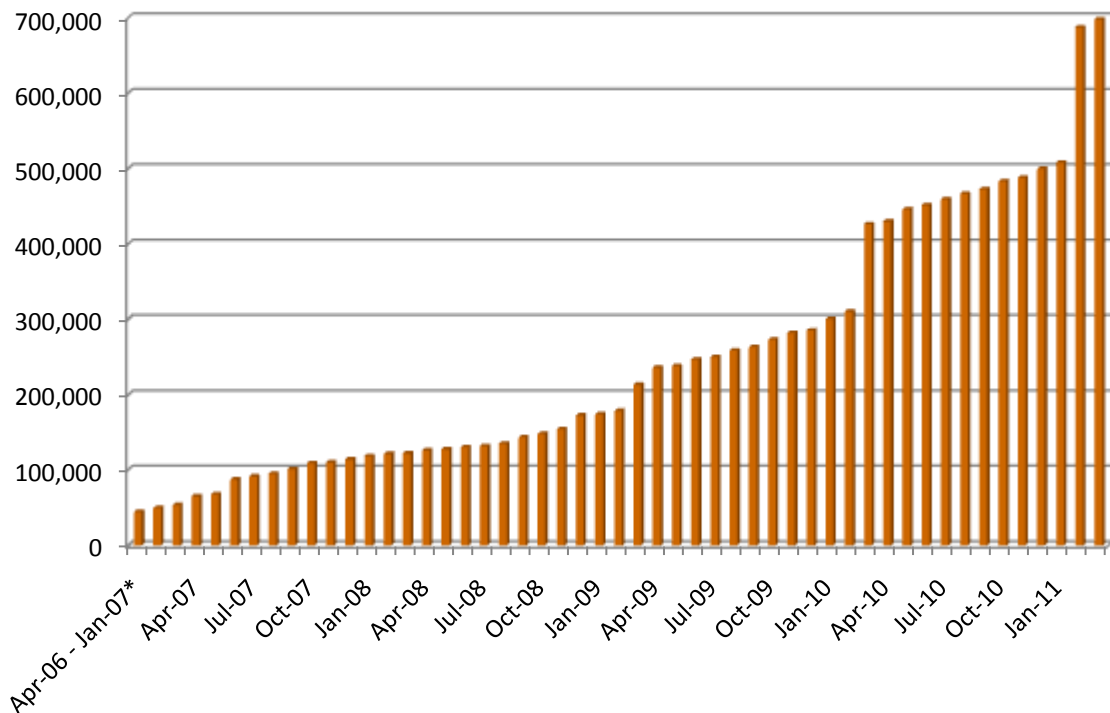
In addition to these figures a number of donations from local hotels, lodges, tour operators and visitors have been given directly to The Butterfly Tree Non-profit Organisation in Zambia.

As always we are extremely grateful to Accountax, Stratford-upon-Avon for reporting on and verifying our accounts.

Expenditure April 2010 - March 2011



Total Money Raised (£ Sterling)



*Pre-Charity Registration



THE BUTTERFLY TREE ORPHAN SPONSORSHIP PROGRAM

'As young butterflies emerge from their pupae, they are placed in a tree, where their wings can continue to develop. Then they are released into the wild'.



Registered charity no. 1118084
3 Gannaway Court, Norton Lindsey, Warwick CV35 8JR
Tel: 44 (0) 1926 843699 Fax: 44 (0) 1926 843879
Email: jane@thebutterflytree.org.uk
www.thebutterflytree.org.uk